

# PARKDALE COLLECTIVE



Curated Rentals By

**RICHCRAFT**

STEP INTO A  
CURATED LIFE  
AT PARKDALE  
COLLECTIVE

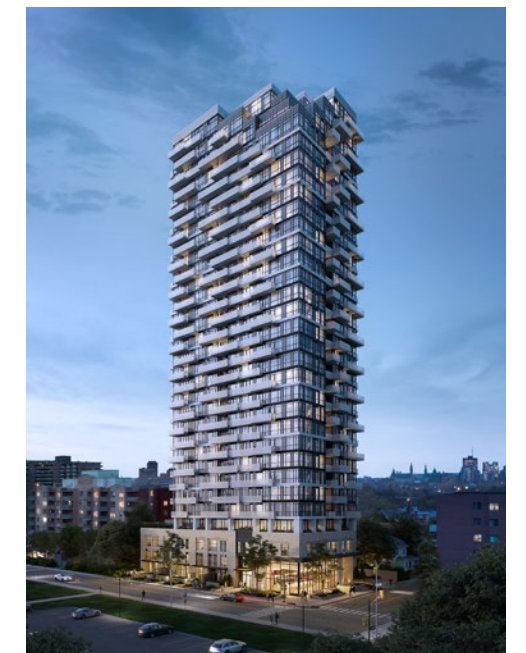


# WELCOME TO CURATED RENTAL LIVING IN OTTAWA

Parkdale Collective offers modern, beautiful, and bright suites in the highly sought-after Hintonburg neighbourhood.



159 PARKDALE AVENUE,  
OTTAWA, ONTARIO



Join a vibrant community that shares your interests and passions. Whether you're new to the city or a seasoned Ottawa, you'll find endless entertainment, activities, and like-minded people to enjoy them with – all made possible by our world-class amenities and programs.

# DON'T JUST RENT, JOIN A COMMUNITY

At Parkdale Collective, we offer a range of programs and events that bring people from diverse backgrounds together. Living here means being part of a fun and energetic community of people from around the globe who enjoy active lifestyles and rich cultural experiences.

## SAVE TIME AND ENERGY EVERY DAY

Richcraft's curated rental experience reduces the stress of urban living by saving you time and energy. Live in a modern, bright, newly built condominium-style suite with top-of-the-line appliances, including in-suite laundry, and 24/7 security for true peace of mind.

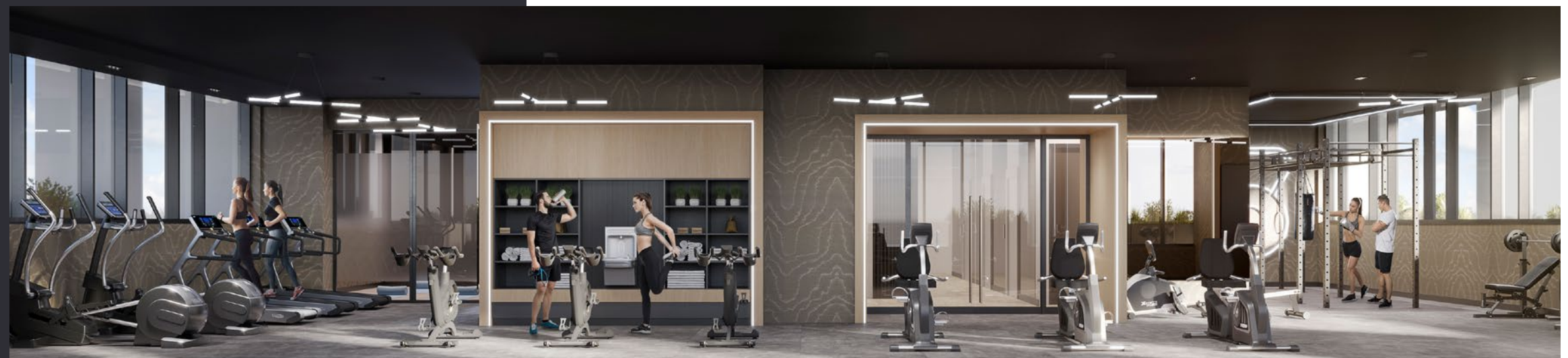
## WE BRING MODERN LIVING TO YOU

Save time and money by eliminating the need for a separate gym membership or a commute to the pool. Enjoy the convenience of on-site fitness and swimming facilities, all within the comfort of your own building.

Secure bike parking and storage means you won't have to leave your bike outside or clutter your hallway. And when it's time to entertain guests, you can always take full advantage of our beautifully designed party room and various social spaces, perfect for hosting and connecting with neighbours.

Most of all, as a member of the Parkdale Collective community, you'll gain access to exclusive resident programs, from running clubs to tasting parties – offering you endless new experiences and connections.

This is more than just living; it's curated living. This is Parkdale Collective.



Outdoor Pool



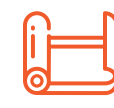
Onsite Fitness



Party Room



Social Spaces



Yoga Studio



24/7 Security



Top-of-the-line Appliances



Poolside Grilling Station



# WALK OR RIDE TO WORK

Parkdale Collective, featuring contemporary architecture, elegant finishes, and bright open-concept suites, is perfectly situated on the edge of downtown Ottawa. This prime location allows you to effortlessly walk, bike, or take public transit to any part of the city, including your workplace.

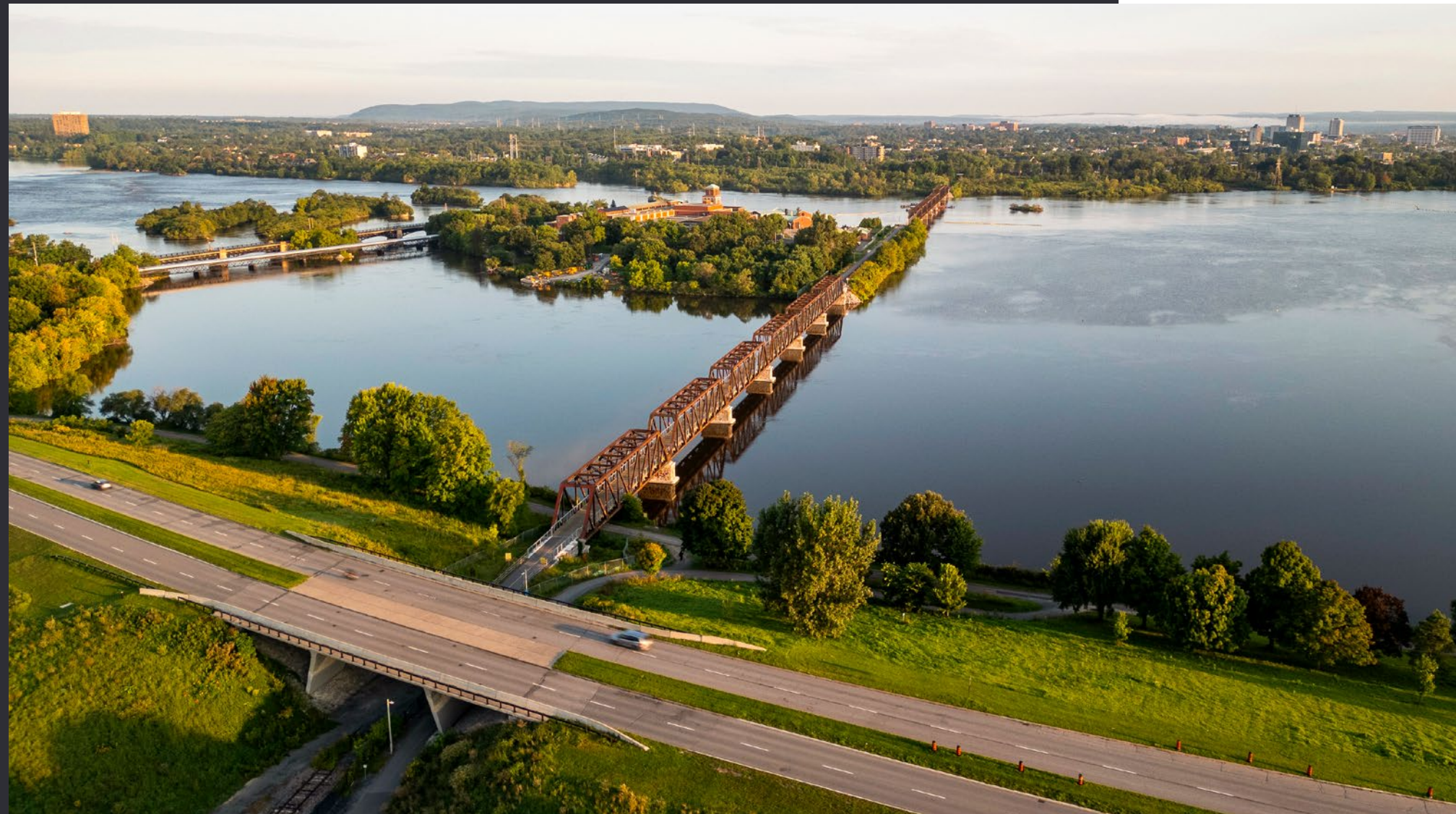


# LIVE IN OTTAWA'S MOST DYNAMIC NEIGHBOURHOOD

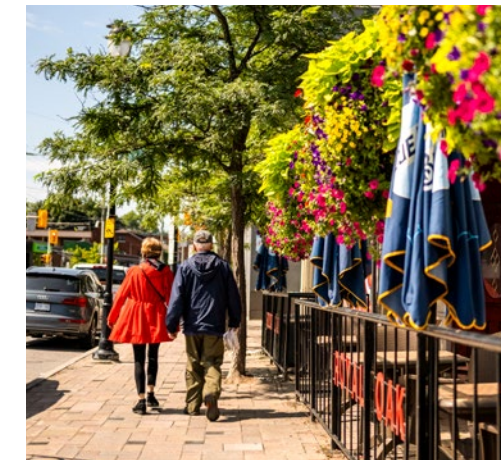
Live your best life in the vibrant neighbourhood of Hintonburg, where indie boutiques, art galleries, theatres, and restaurants provide endless entertainment options. Convenient public transit and a thriving local culture make Hintonburg the top destination for people seeking a distinctive, artistic neighbourhood in Ottawa.



Parkdale Public Market



Chief William Commanda Bridge, Kichi Zibi Mikan, and the Trans Canada Trail on the Ottawa River



The Royal Oak Pub



Hello Dolly, next to Tooth and Nail Brewing Company

# NEIGHBOURHOOD AMENITY MAP



## GROCERY

- 1 Rexall
- 2 Beer Store
- 3 Parkdale Public Market
- 4 Lyndale Corner Food Market
- 5 Hintonburg Market
- 6 LCBO

## BANKS

- 24 BMO Bank of Montreal
- 25 TD Canada Trust
- 26 RBC Royal Bank

## ENTERTAINMENT

- 27 Hintonburg Pottery
- 28 Great Canadian Theatre Company
- 29 West Park Bowling

## RESTAURANTS

- 7 Gong Cha
- 8 Chungchun Rice Dog
- 9 Golden Thai
- 10 Starbucks
- 11 Mr. Hot Potato
- 12 Mi Amor Tacos
- 13 Drip House
- 14 Supply and Demand
- 15 Sharpfle Waffle
- 16 Braumeister Bierhalle
- 17 Bismallah Pies
- 18 Elmdale Oyster House
- 19 The Third
- 20 SuzyQ Doughnuts
- 21 Tooth and Nail Brewing Company

## WELLNESS

- 30 Holland Cross Dental Centre
- 31 Ottawa Jiu Jitsu
- 32 The Rig Boxing
- 33 Epic Cycles
- 34 CrossFit Hintonburg
- 35 Uppliva Nordic Spa

## PARKS

- 36 Fisher Park
- 37 Goldenrod Community Garden
- 38 Laroche Park
- 39 Hintonburg Park
- 40 Parkdale Bullman Temporary Community Garden

## PLACES OF WORSHIP

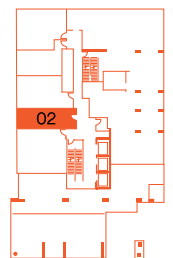
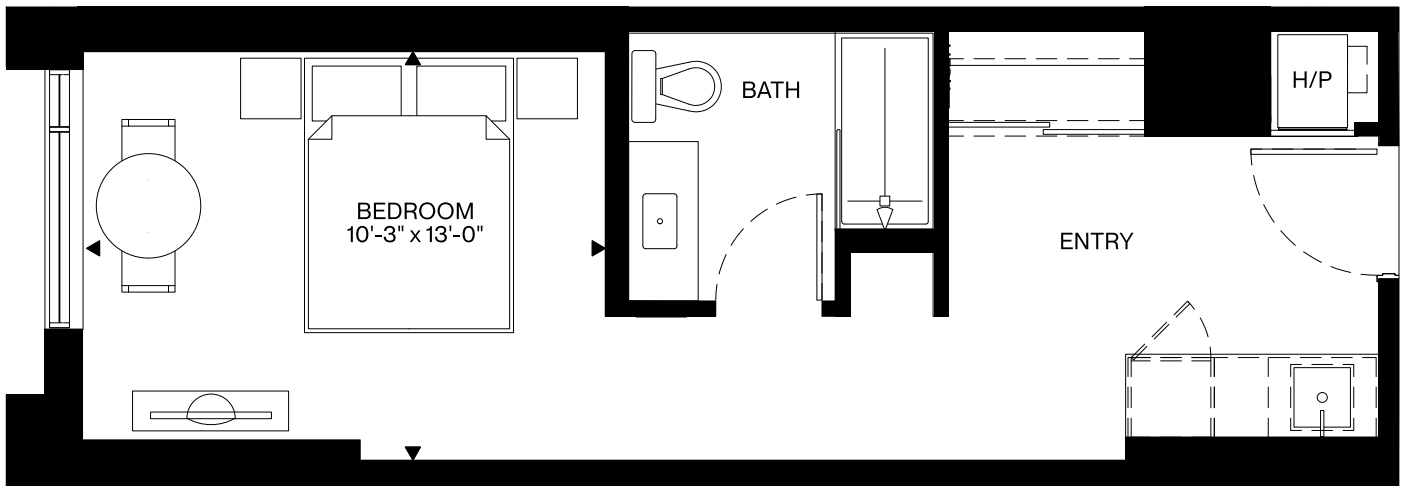
- 22 St. Leopold Mandic Croatian Church
- 23 Protection of the Holy Virgin Memorial Church





# Bayswater

395 Sq. Ft.  
Interior

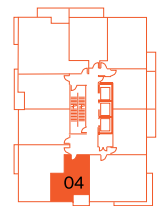
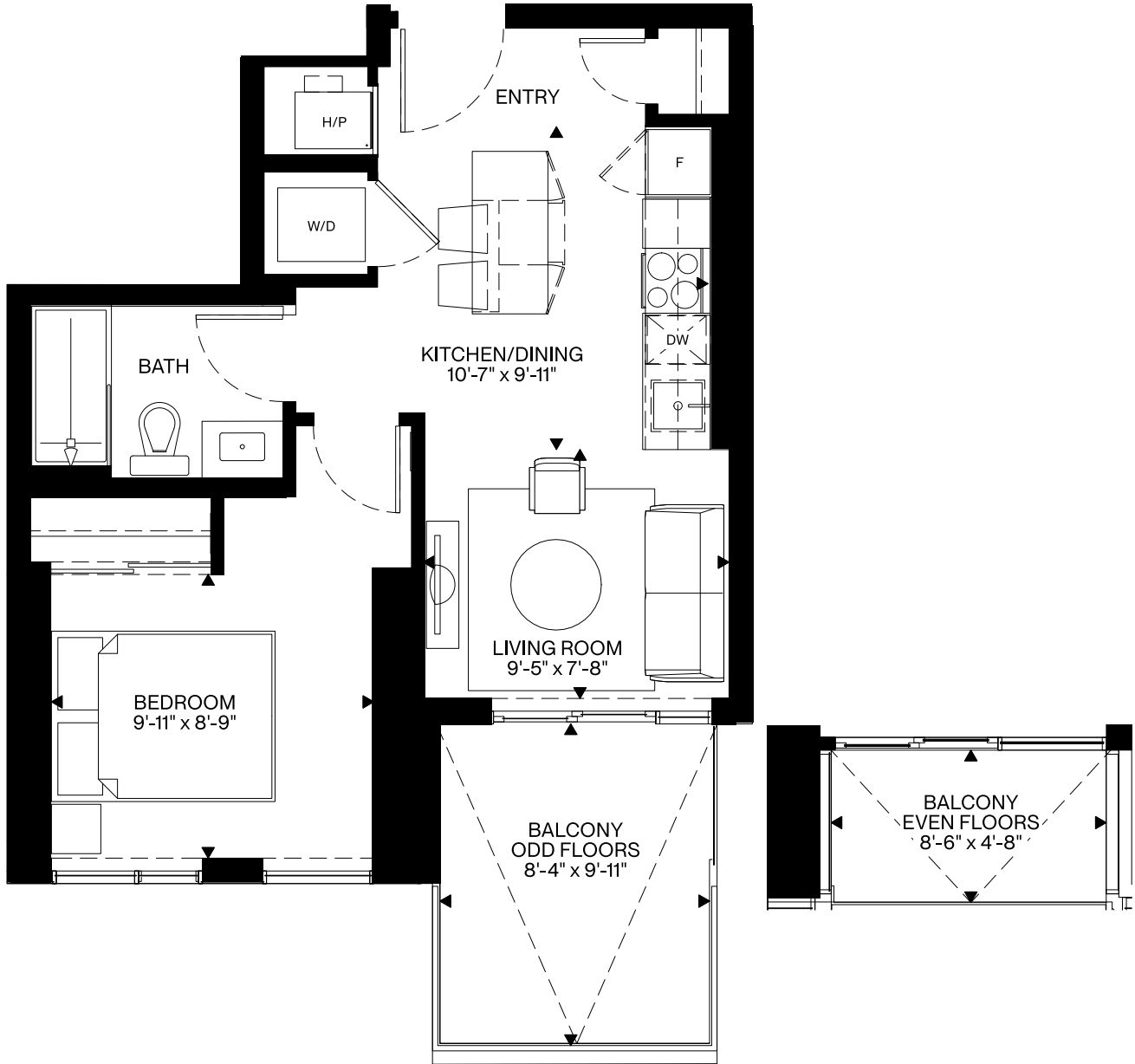


2nd



# Somerset

482 Sq. Ft.  
Interior

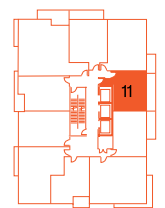
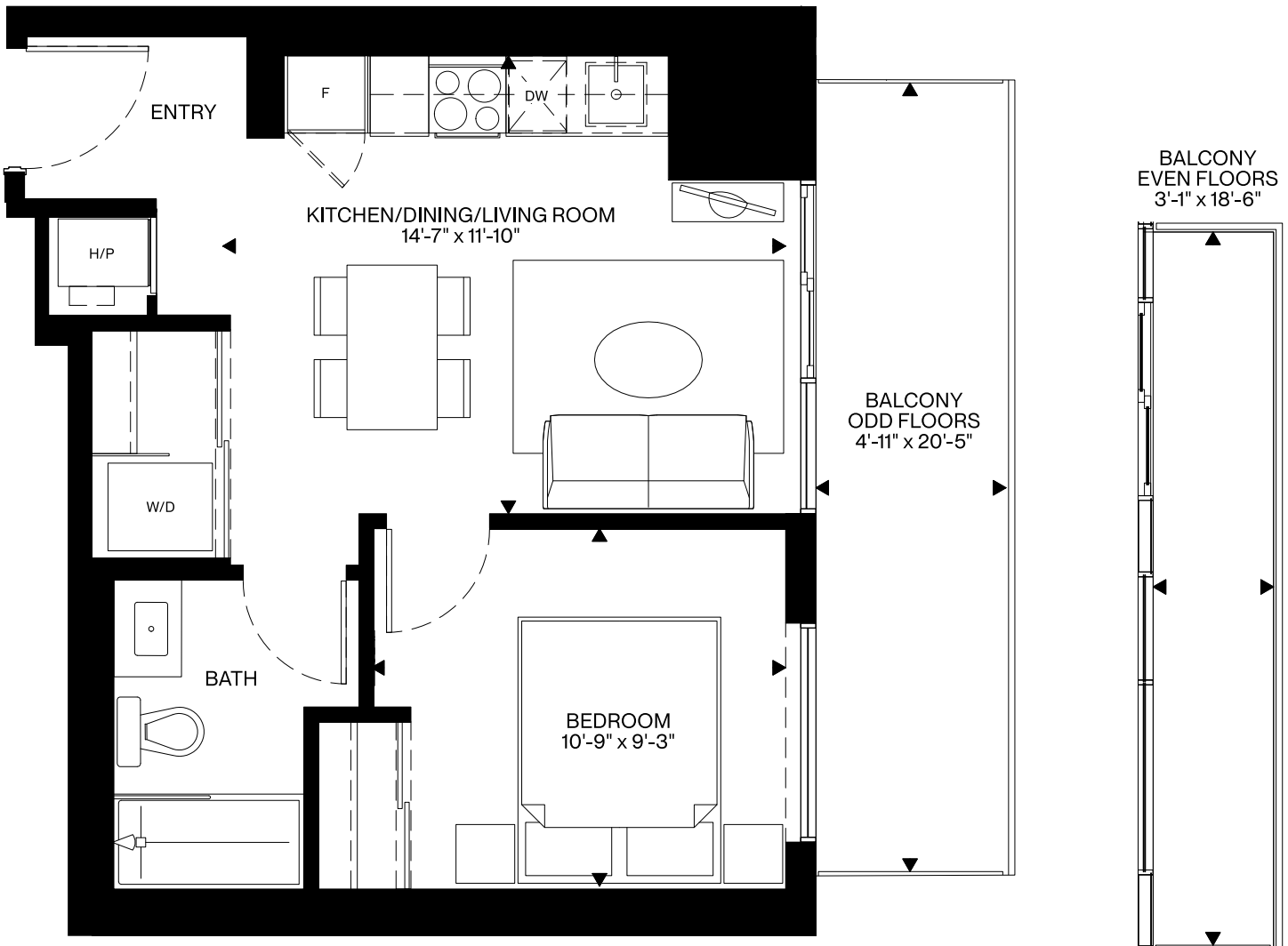


5-27th



# Pinehurst

466 Sq. Ft.  
Interior



5-31st

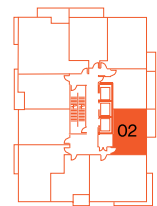
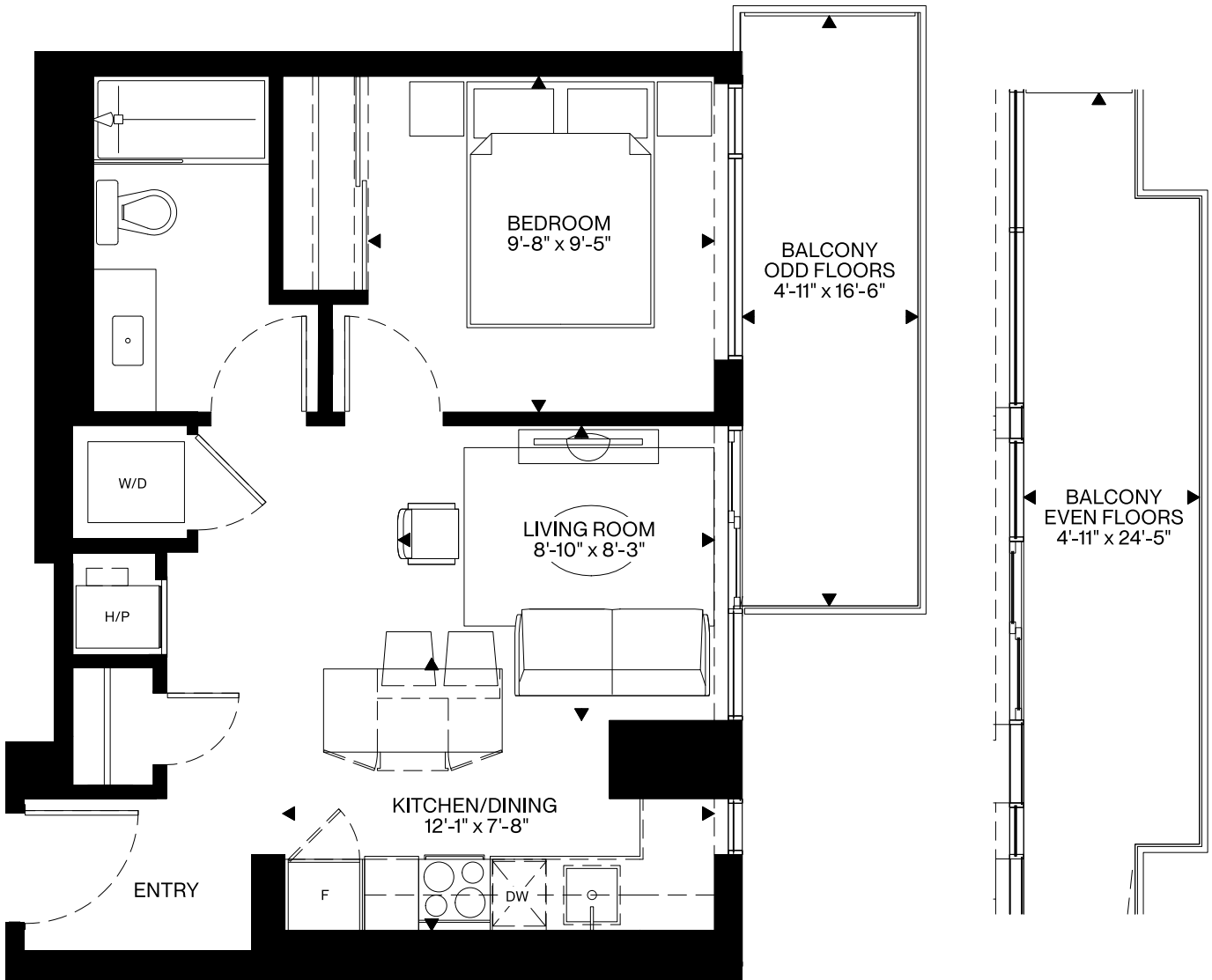
All plans, materials, dimensions and specifications are subject to change without notice.  
Actual usable floor space may vary from stated floor area. E.&O.E.

**RICHCRAFT**



# Laurel

508 Sq. Ft.  
Interior

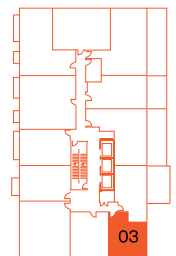
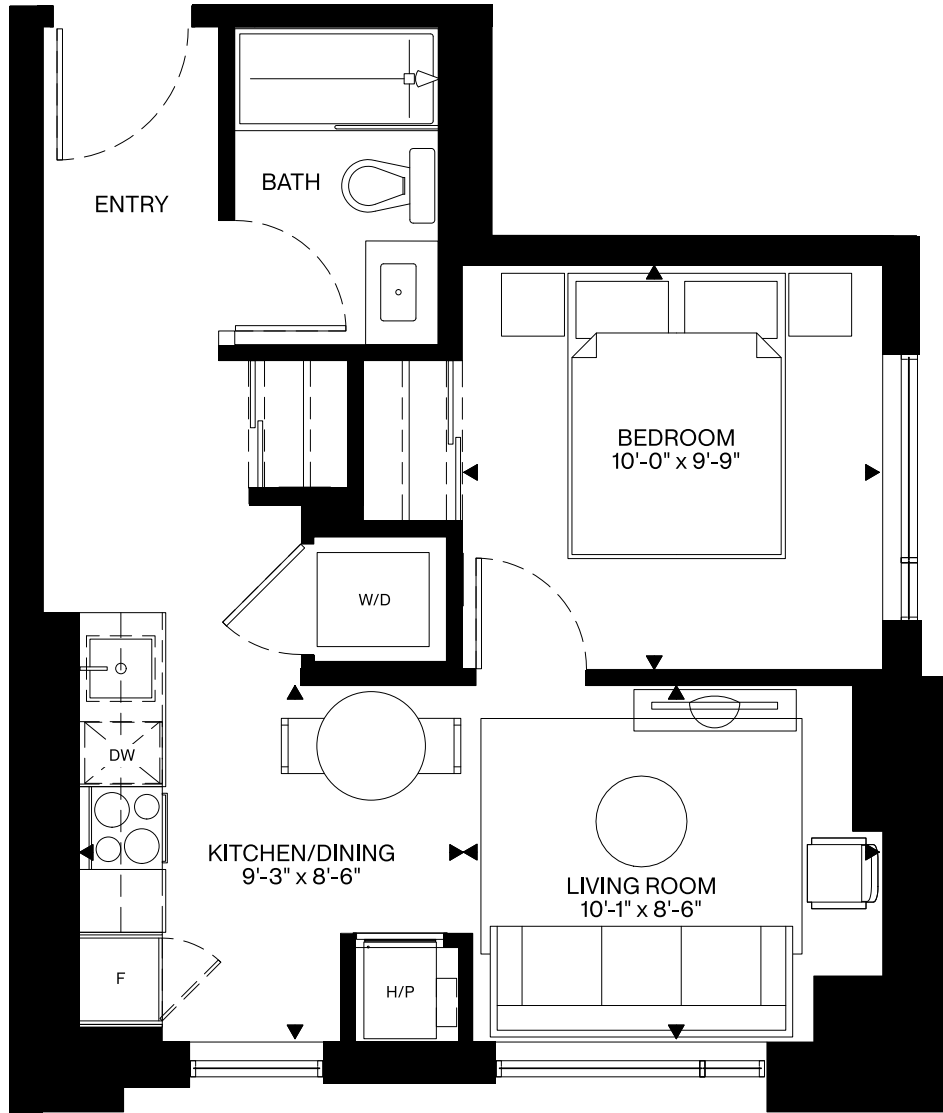


5-31st



# Scott

512 Sq. Ft.  
Interior

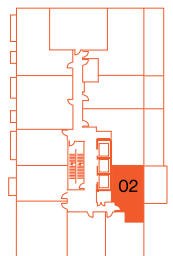
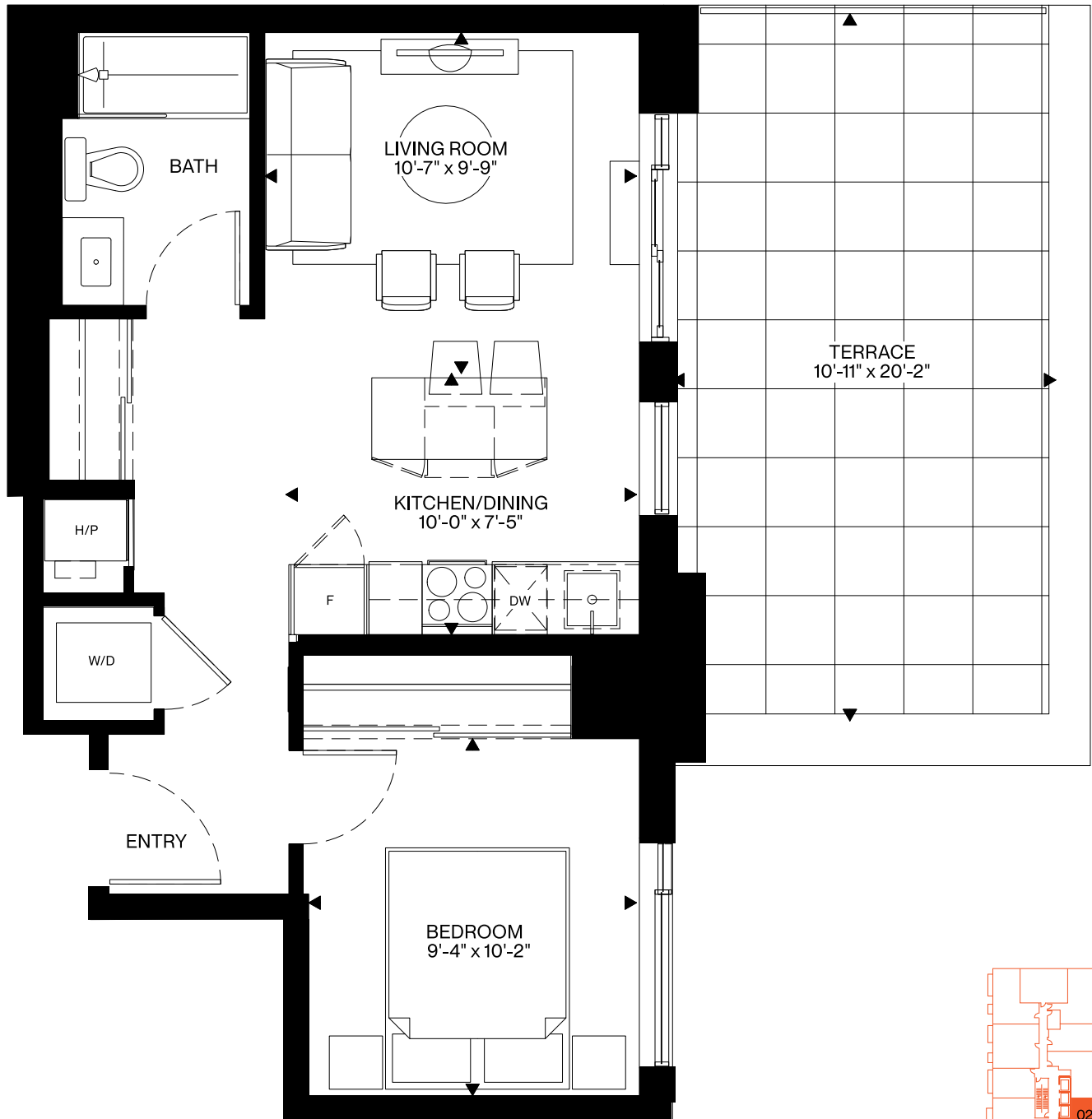


3rd



# Carruthers

547 Sq. Ft.  
Interior

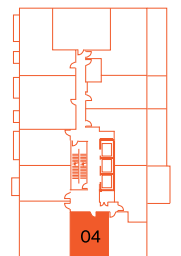
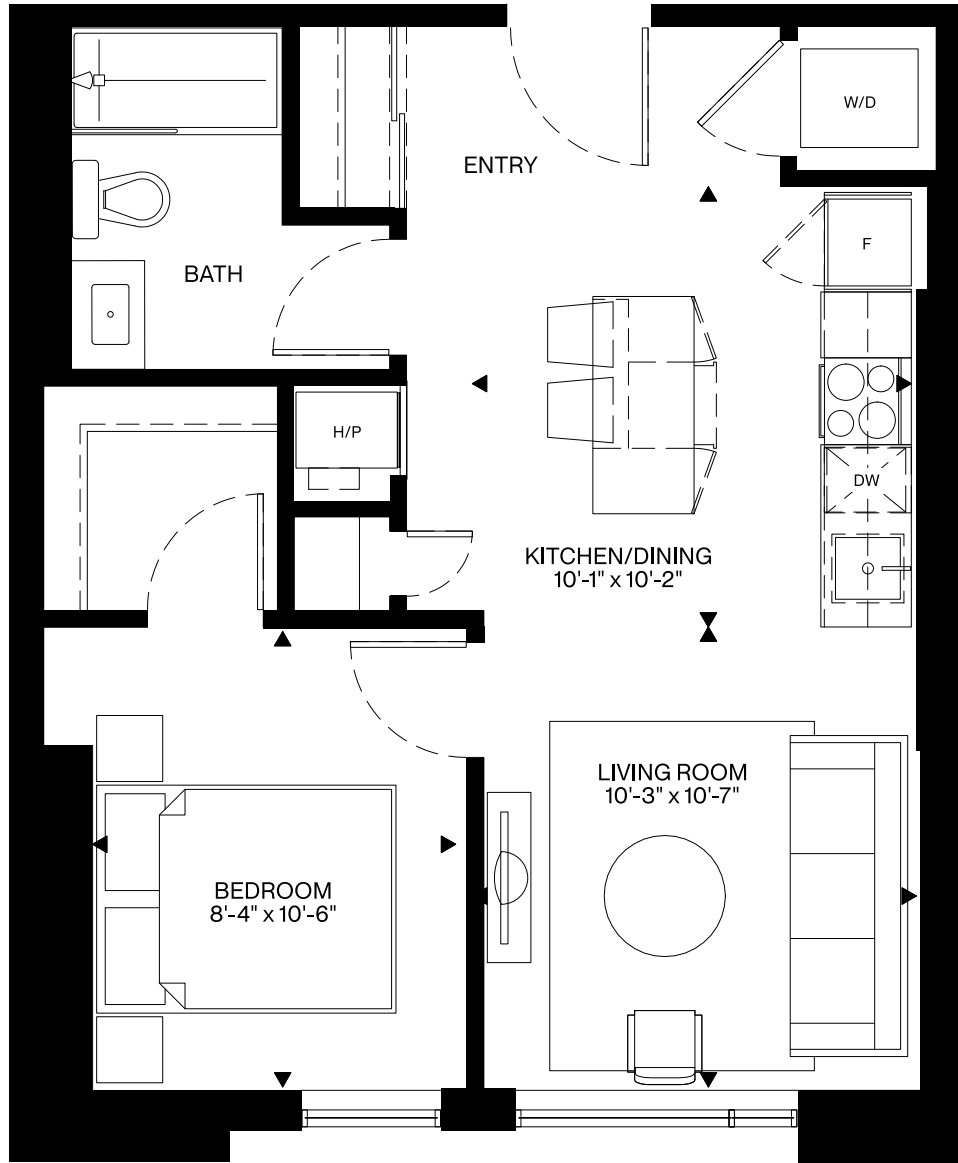


3rd



# Merton

555 Sq. Ft.  
Interior



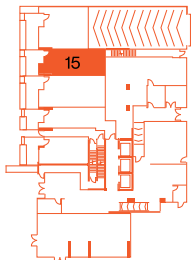
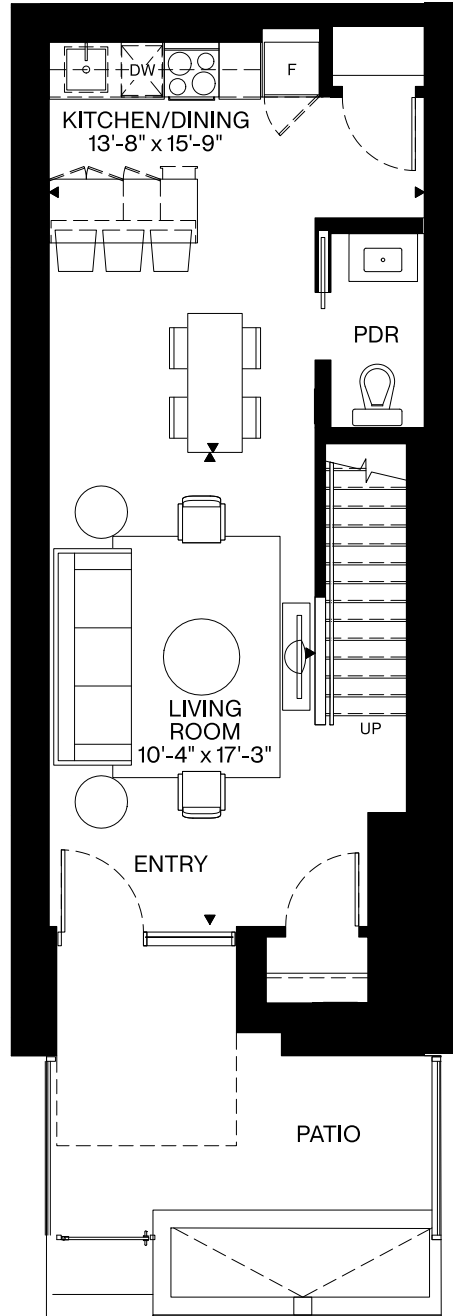
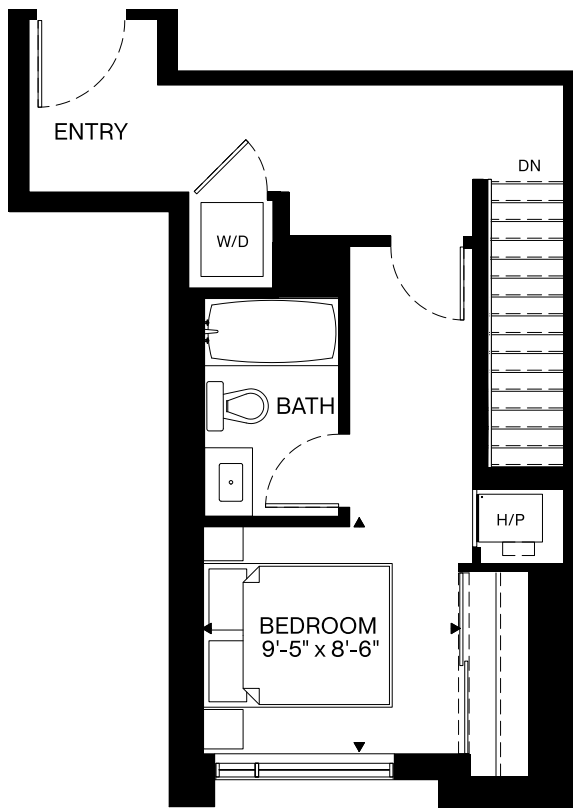
3rd



# Sherbrooke

557 Sq. Ft.  
1st Level

401 Sq. Ft. 2nd Level    958 Sq. Ft. Total



Ground



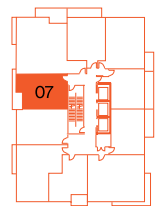
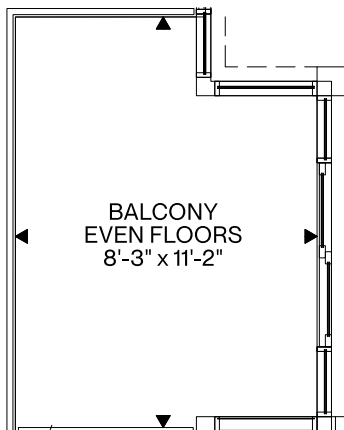
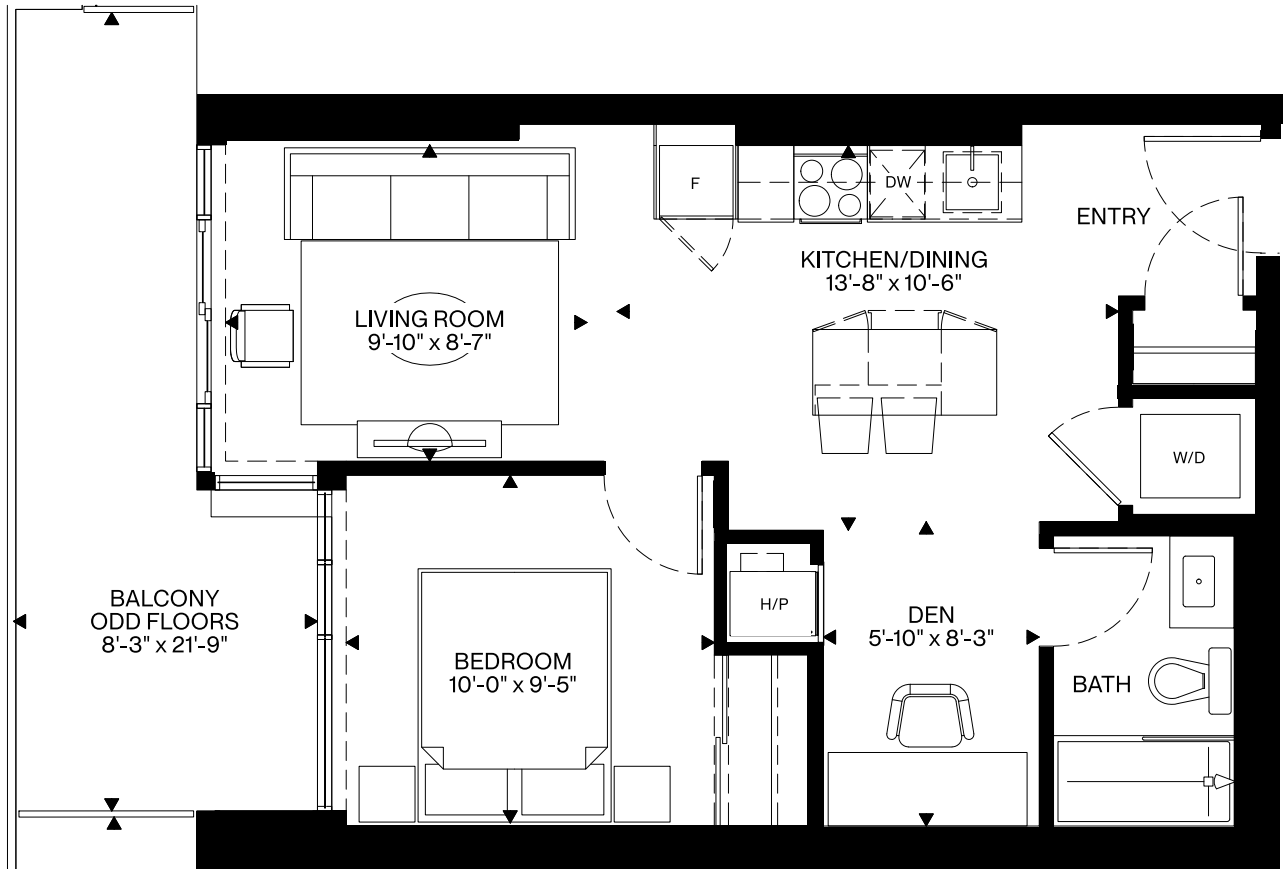
2nd

All plans, materials, dimensions and specifications are subject to change without notice. Actual usable floor space may vary from stated floor area. E.&O.E.



# Carleton

568 Sq. Ft.  
Interior

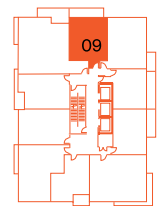
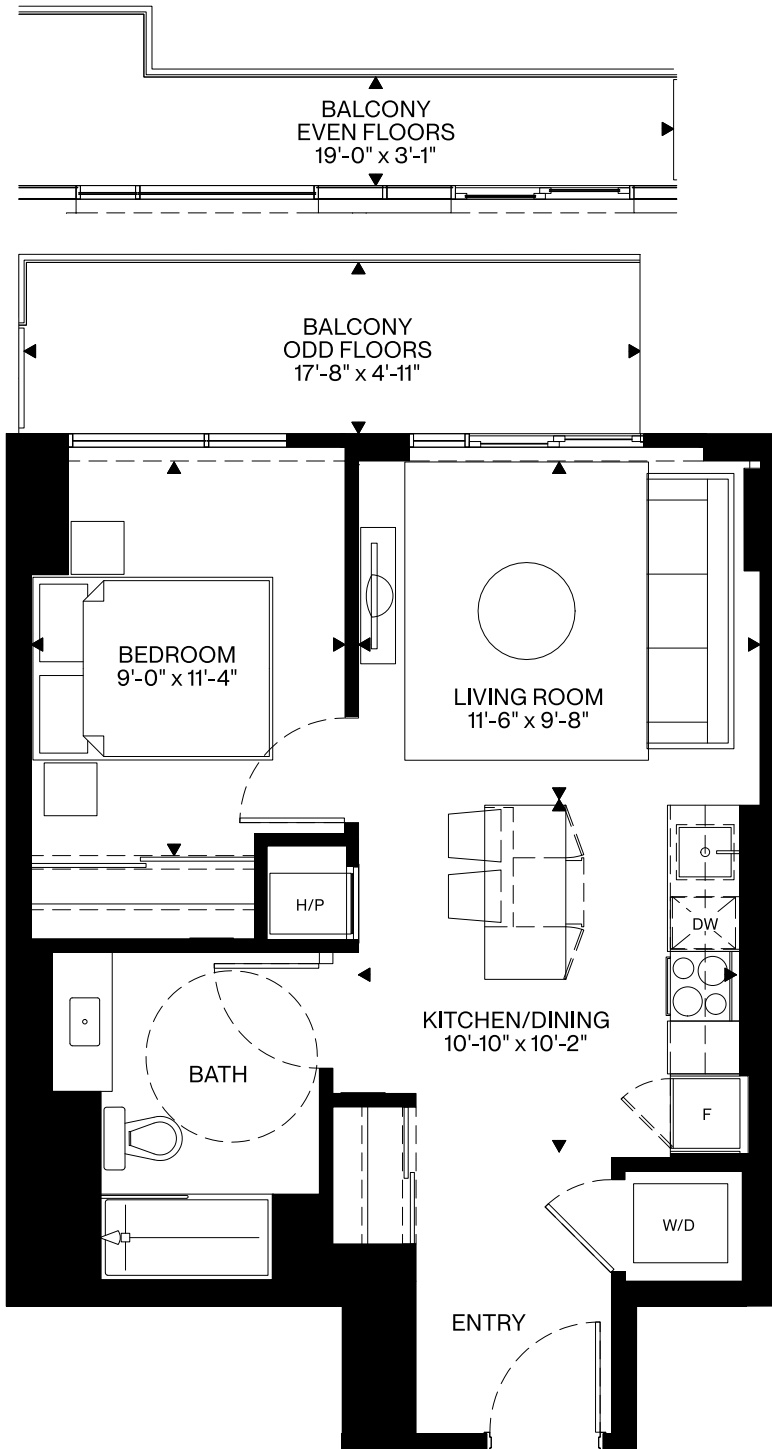


5-27th



# Outaouais

559 Sq. Ft.  
Interior

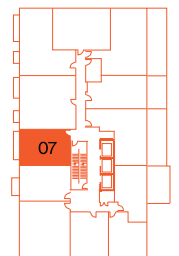
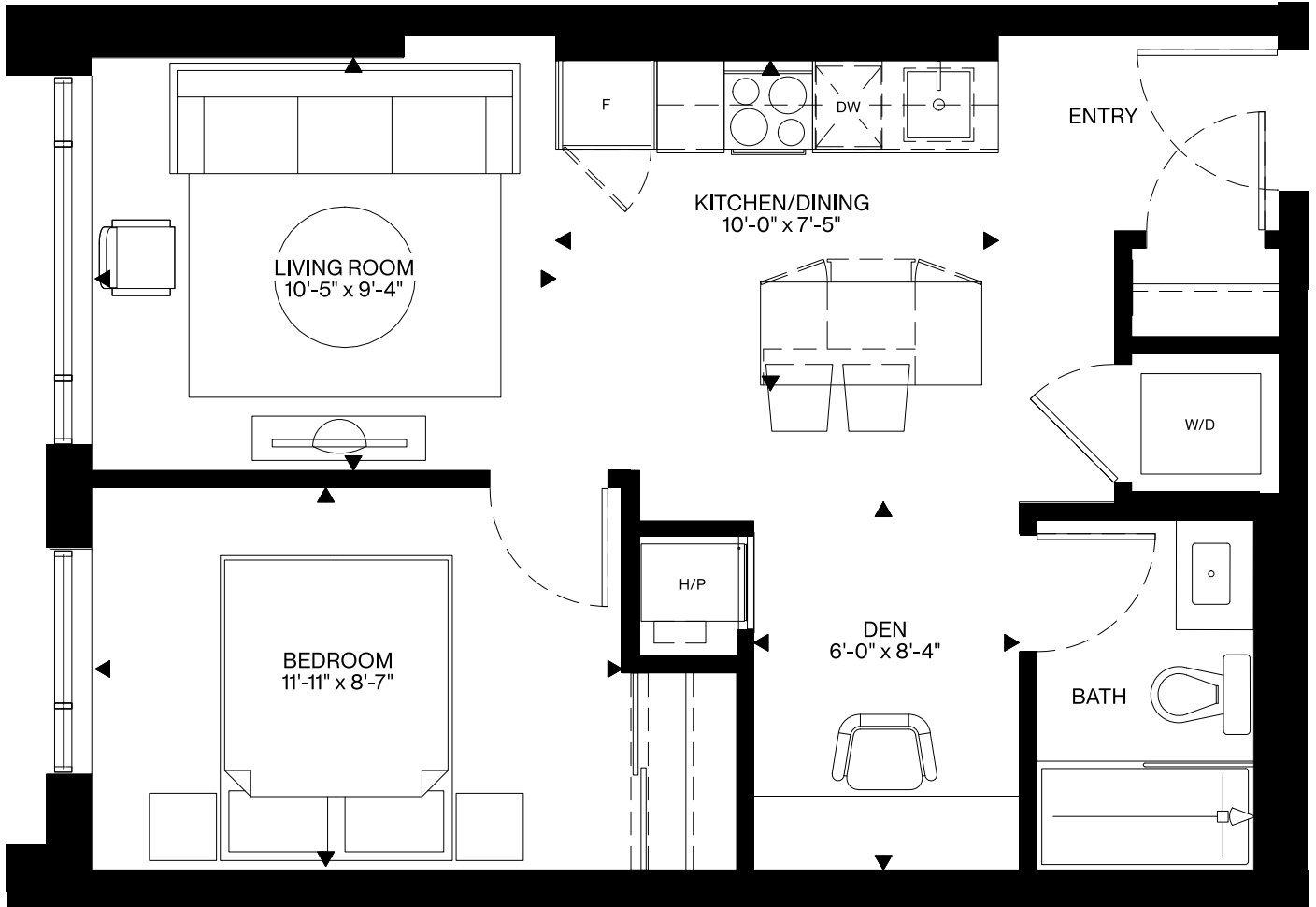


5-31st



# Huron

578 Sq. Ft.  
Interior



3rd

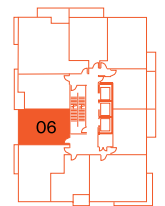
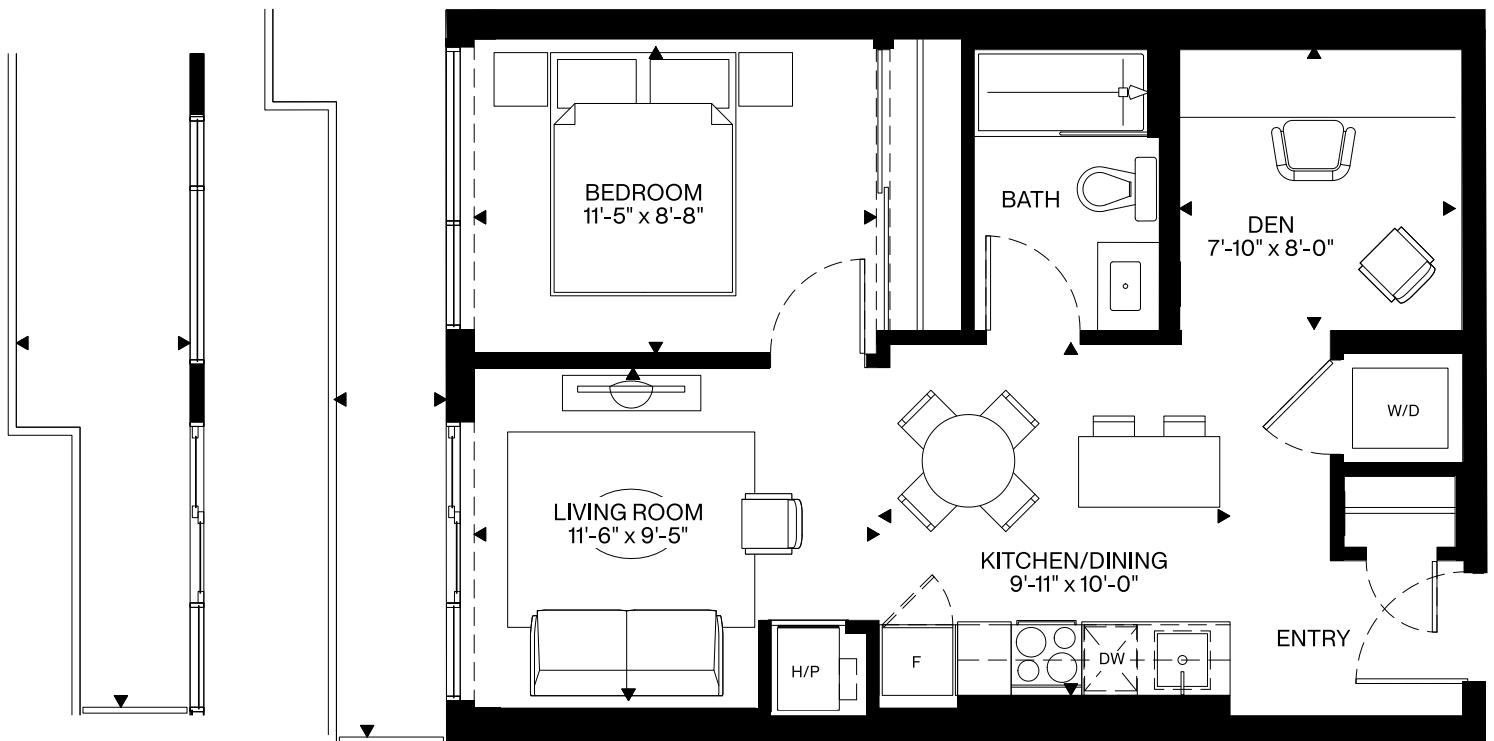


# Parkdale

594 Sq. Ft.  
Interior

BALCONY  
EVEN FLOORS  
4'-11" x 19'-1"

BALCONY  
ODD FLOORS  
3'-2" x 21'-2"



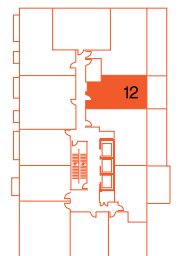
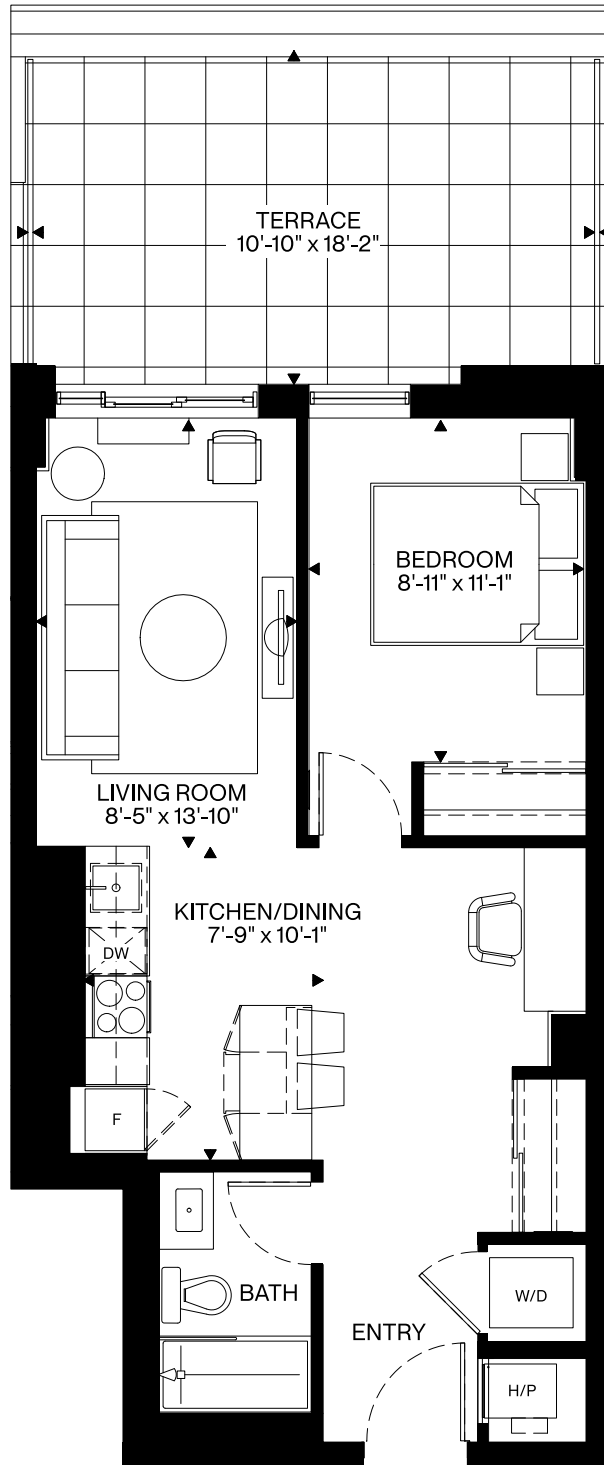
5-27th

All plans, materials, dimensions and specifications are subject to change without notice.  
Actual usable floor space may vary from stated floor area. E.&O.E.



# Forward

618 Sq. Ft.  
Interior

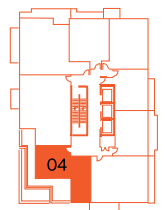
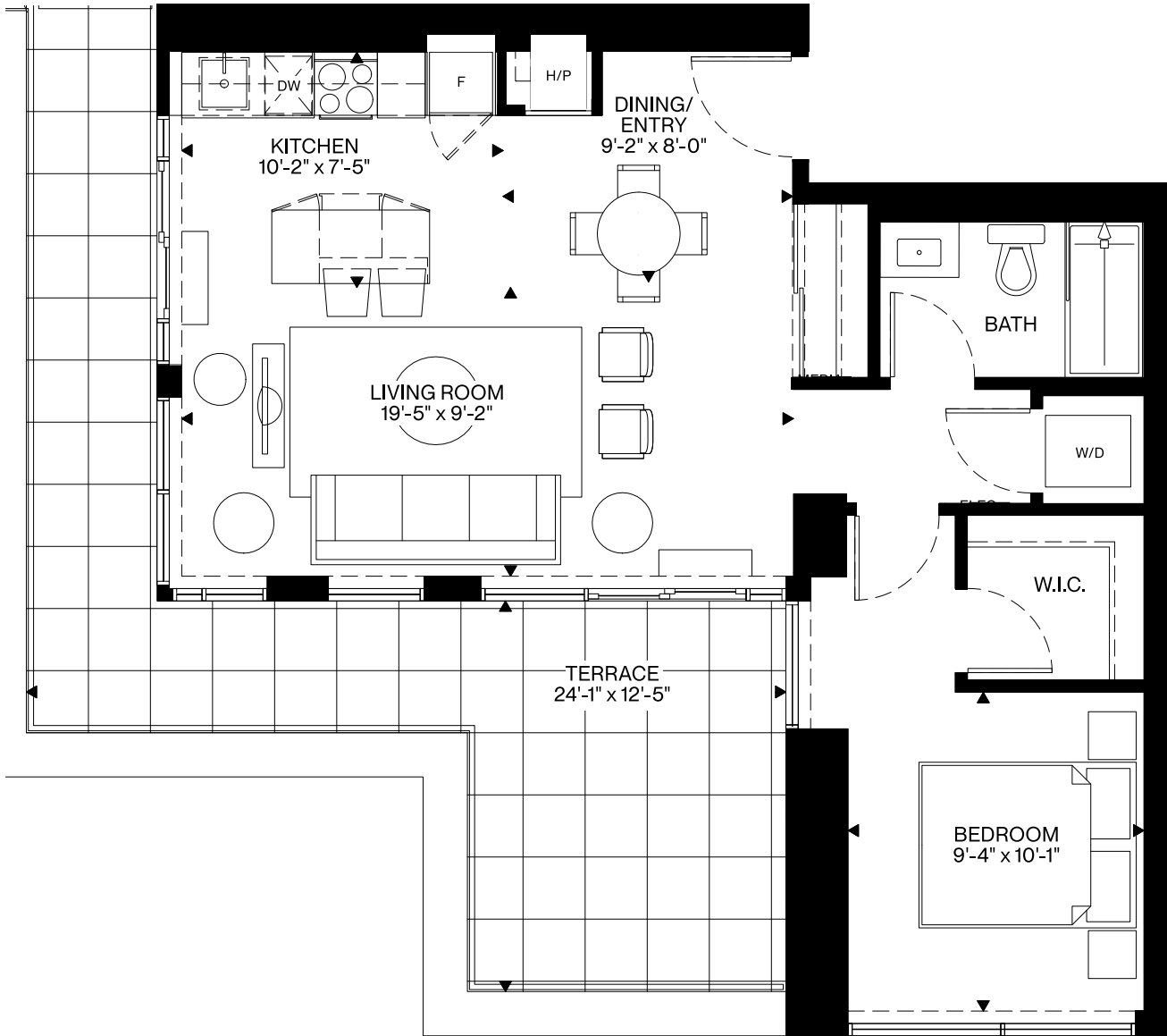


3rd



# Mayfair

687 Sq. Ft.  
Interior

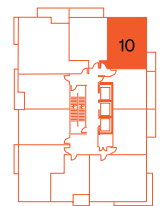
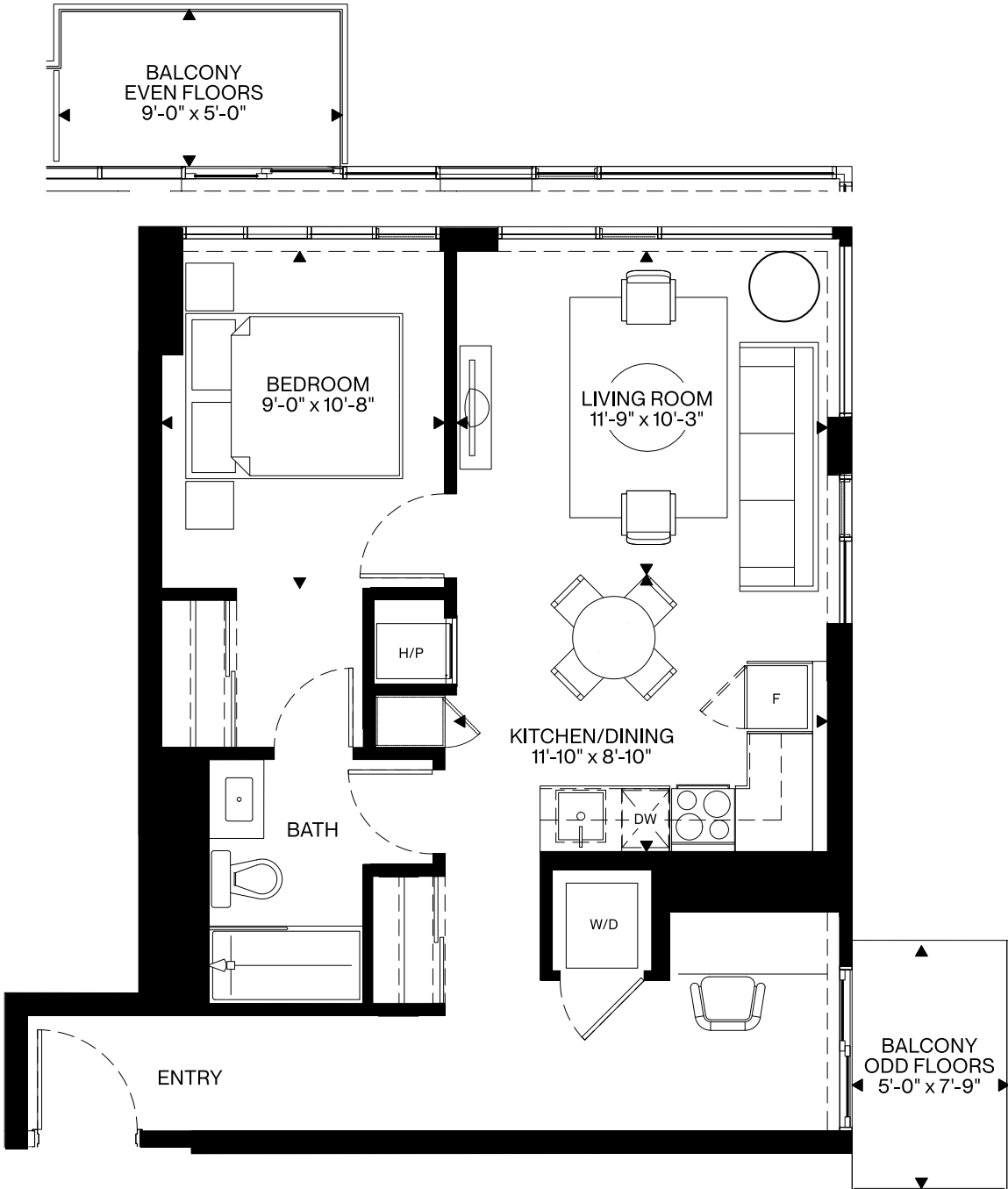


30th



# Hintonburg

669 Sq. Ft.  
Interior

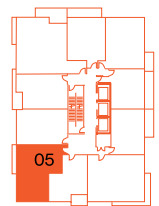
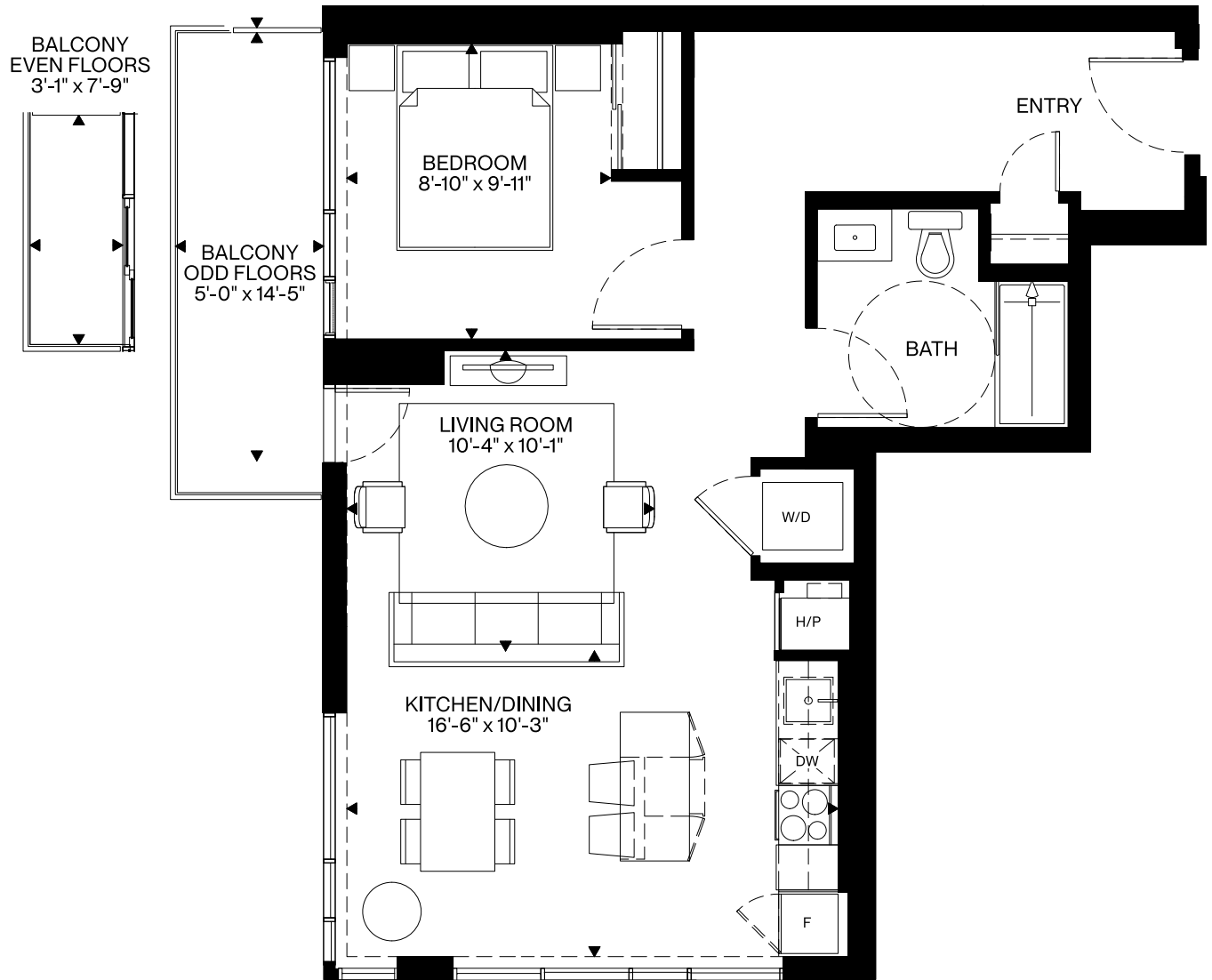


5-31st



# Bayview

720 Sq. Ft.  
Interior



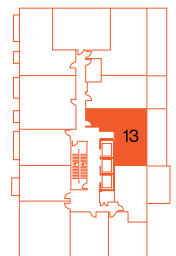
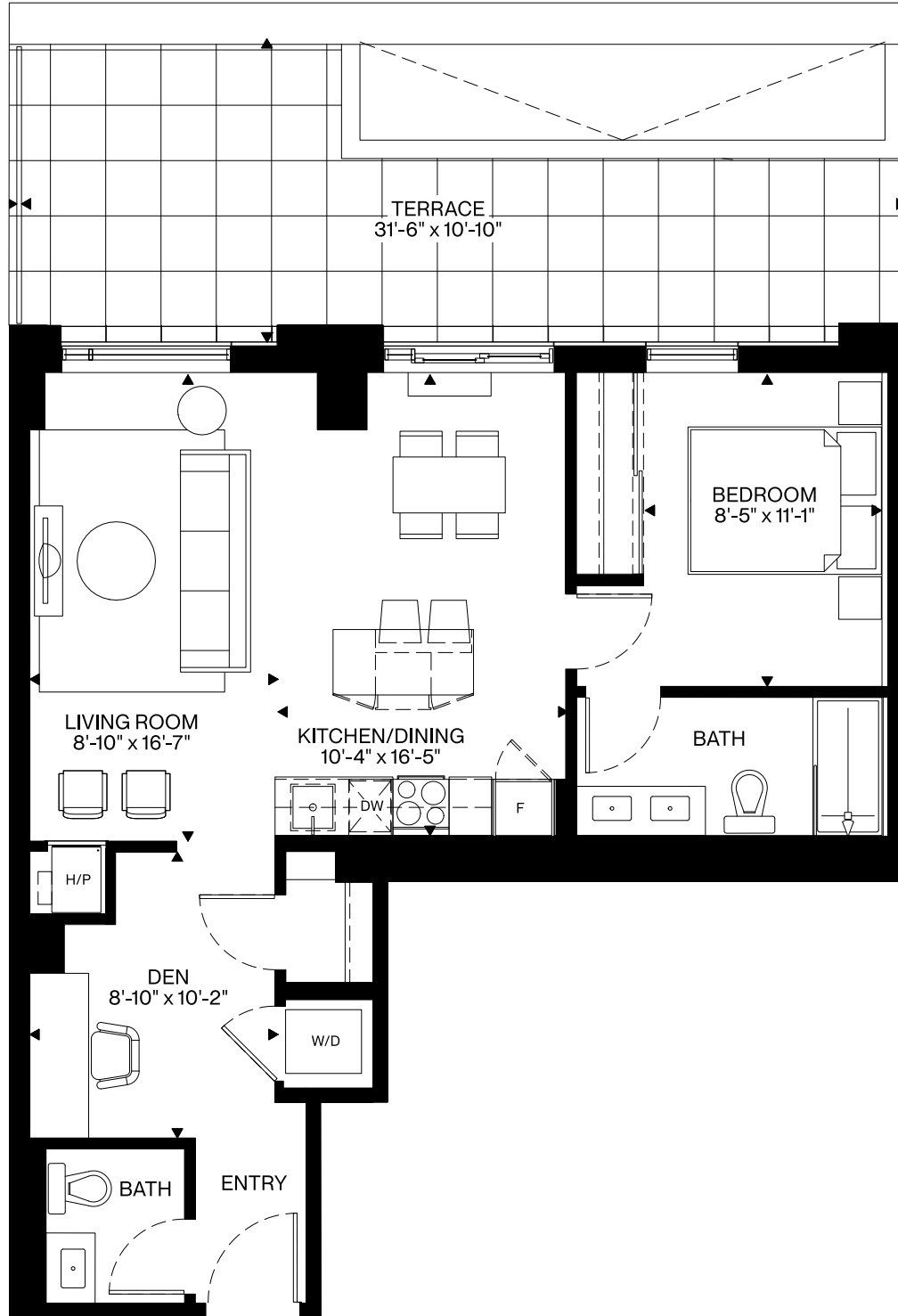
05

5-27th



# Hinchey

795 Sq. Ft.  
Interior

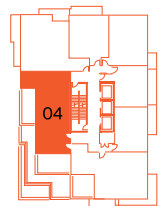
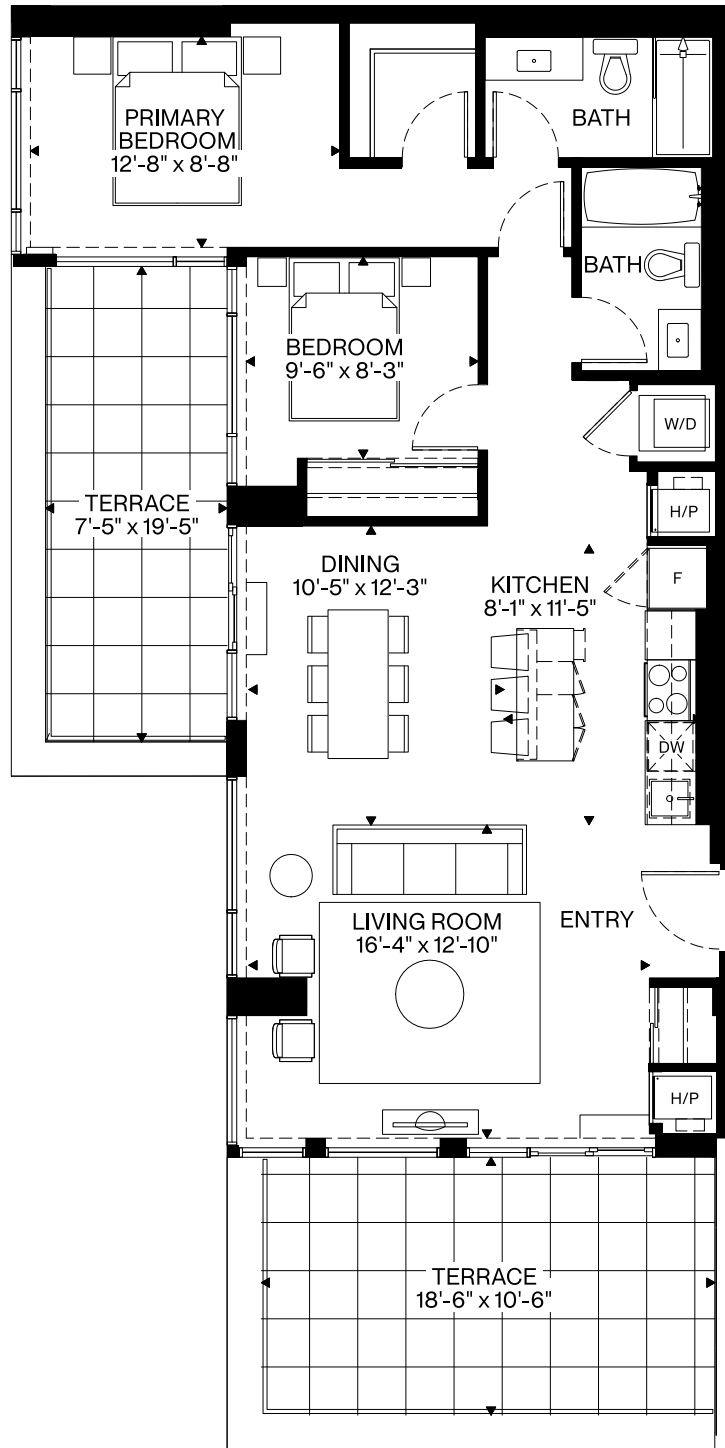


3rd



# Holland

1051 Sq. Ft.  
Interior

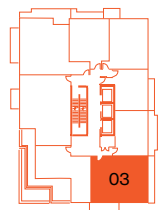
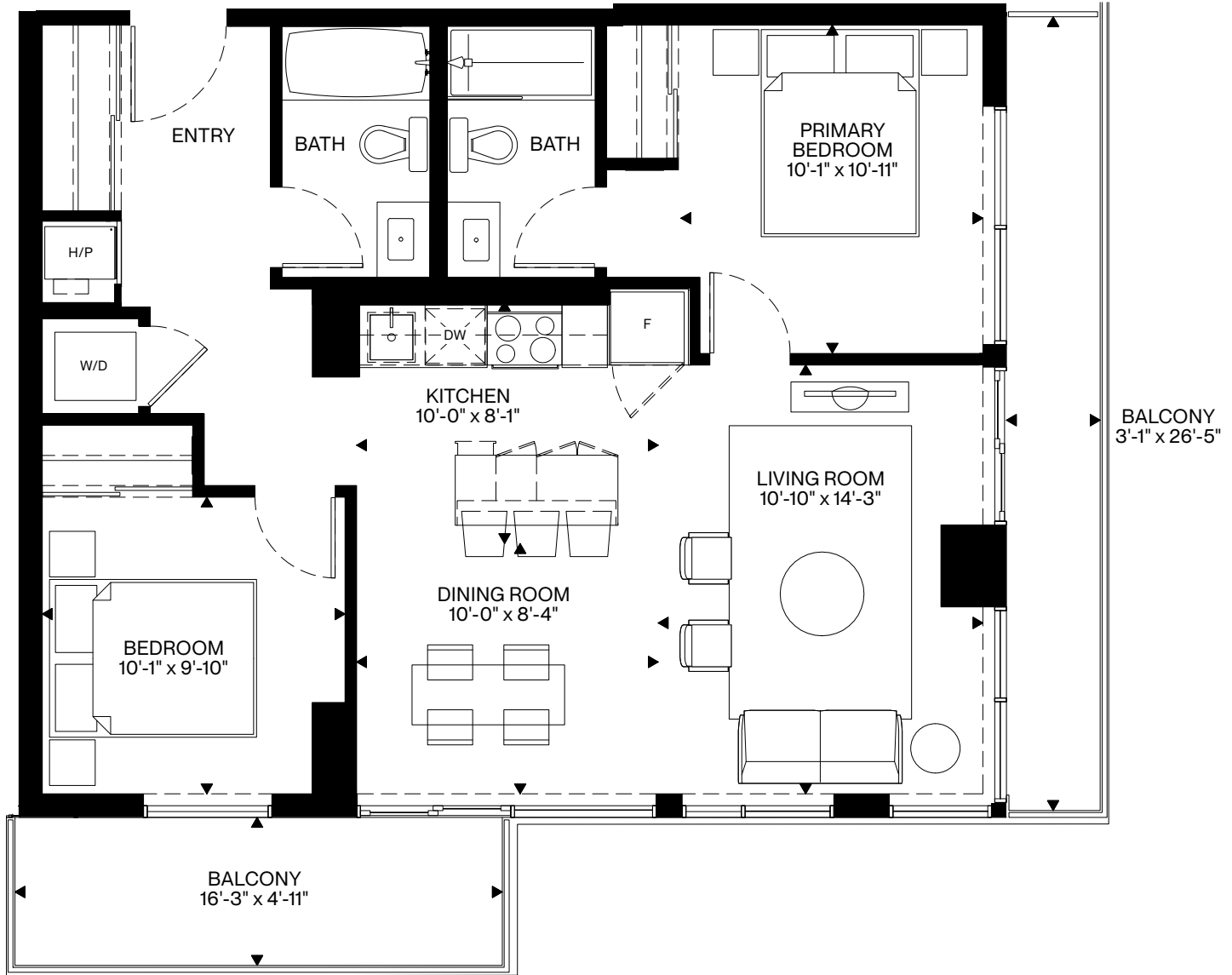


31st



# Fairmont

869 Sq. Ft.  
Interior



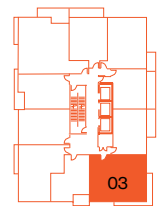
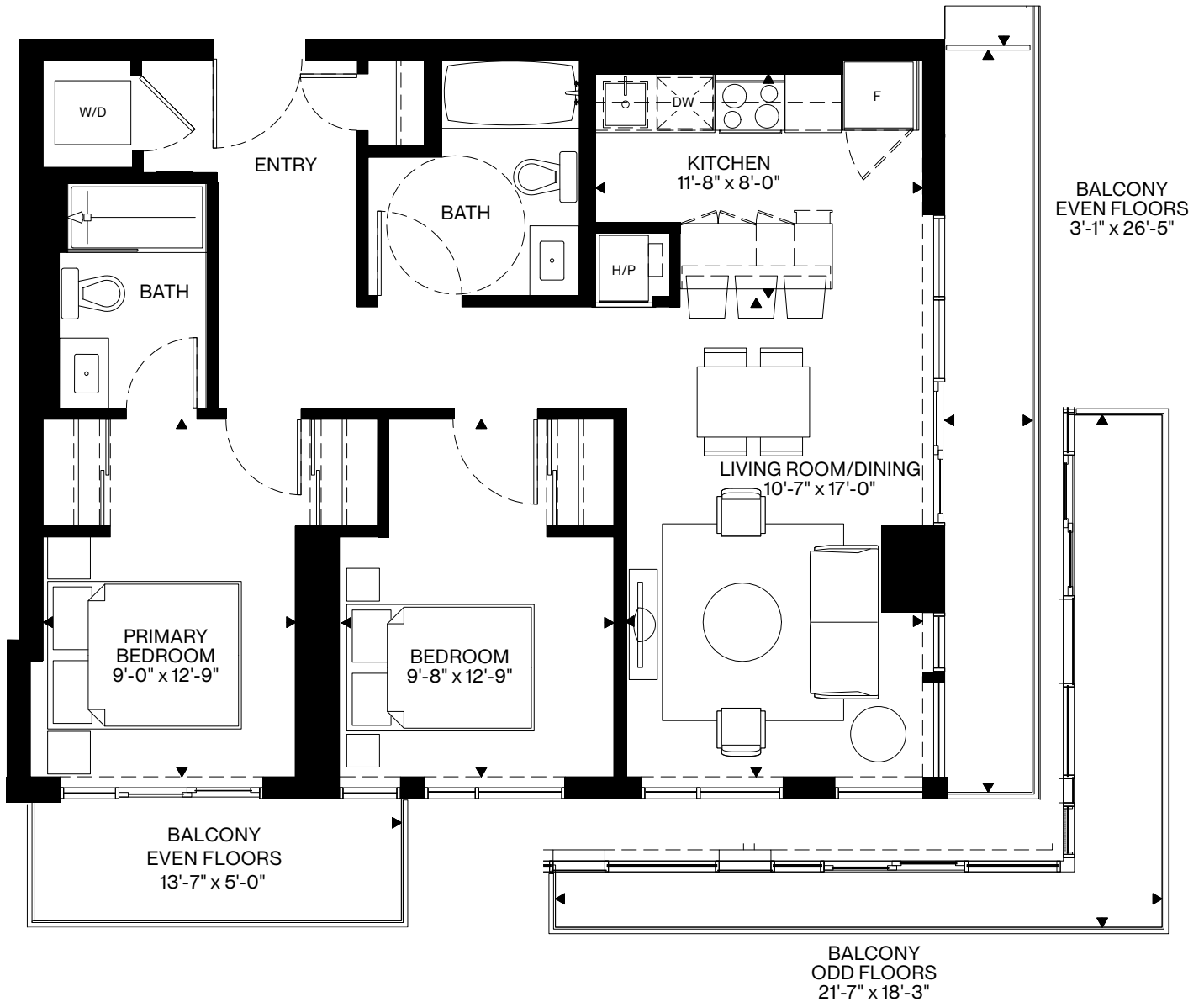
30th

All plans, materials, dimensions and specifications are subject to change without notice. Actual usable floor space may vary from stated floor area. E.&O.E.



# Pinhey

873 Sq. Ft.  
Interior



5-27th

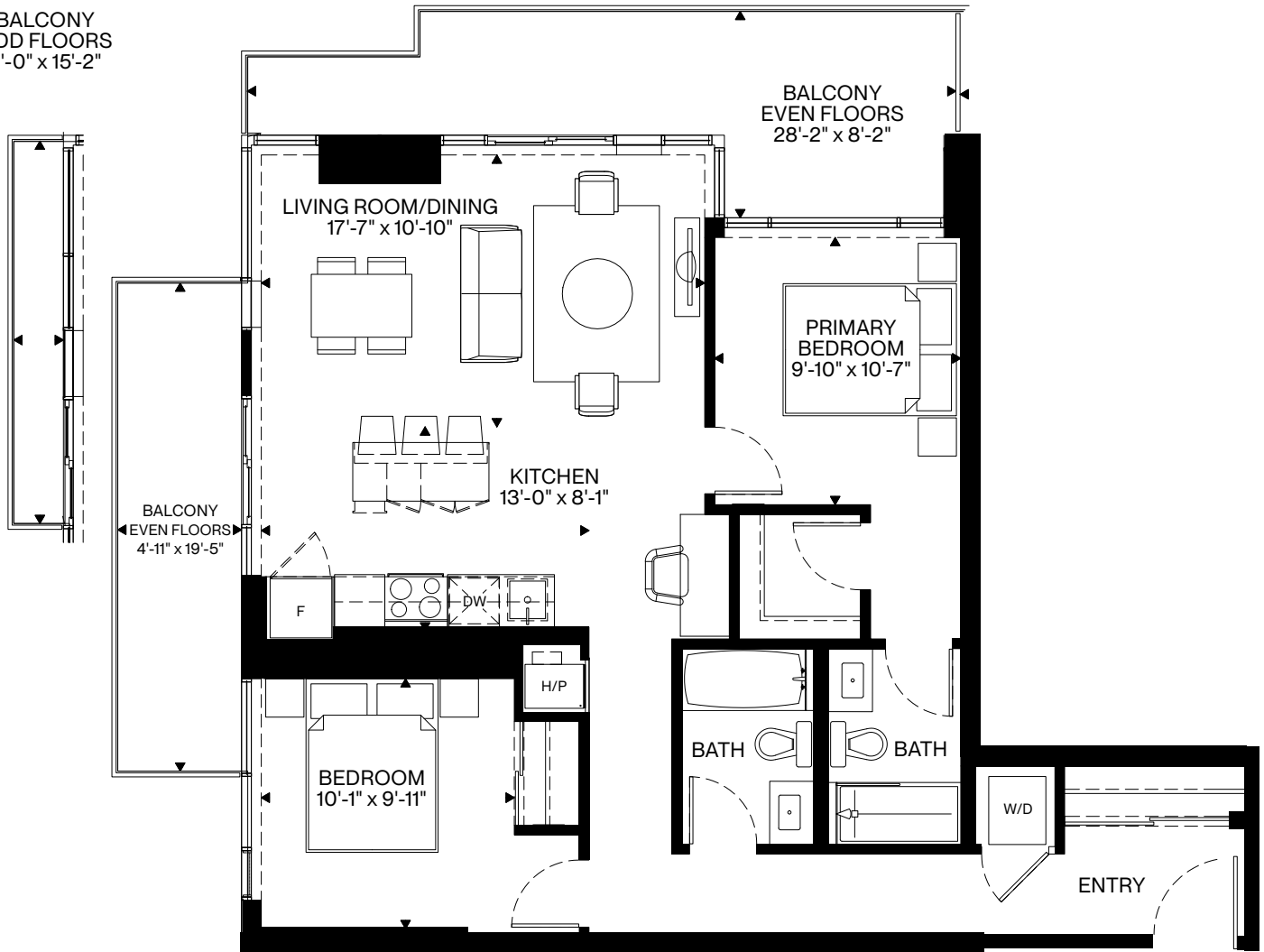
All plans, materials, dimensions and specifications are subject to change without notice. Actual usable floor space may vary from stated floor area. E.&O.E.



# Deschênes

990 Sq. Ft.  
Interior

BALCONY  
ODD FLOORS  
2'-0" x 15'-2"

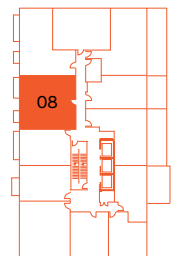
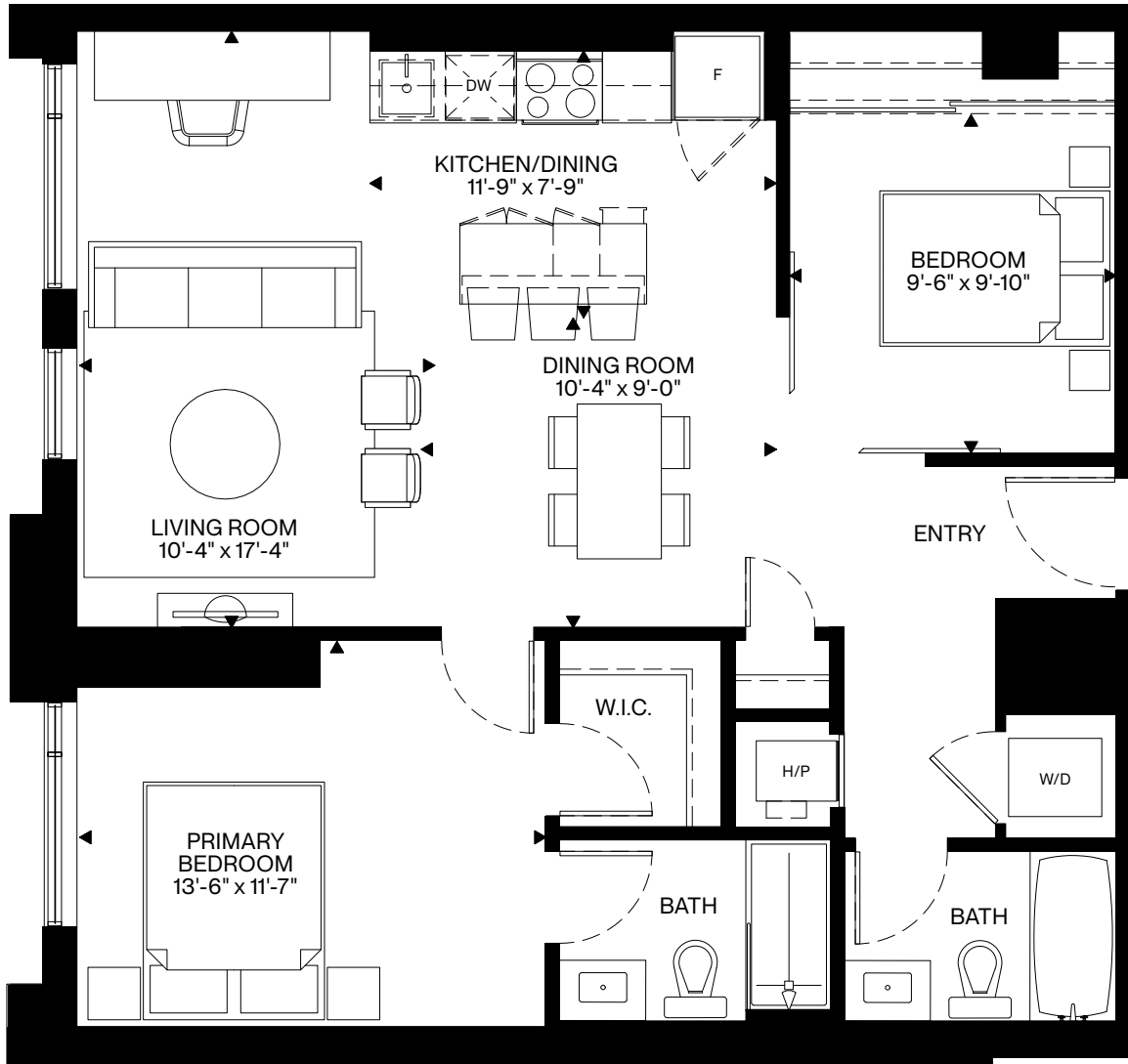


5-27th



# Ross

959 Sq. Ft.  
Interior

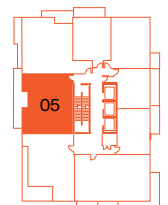
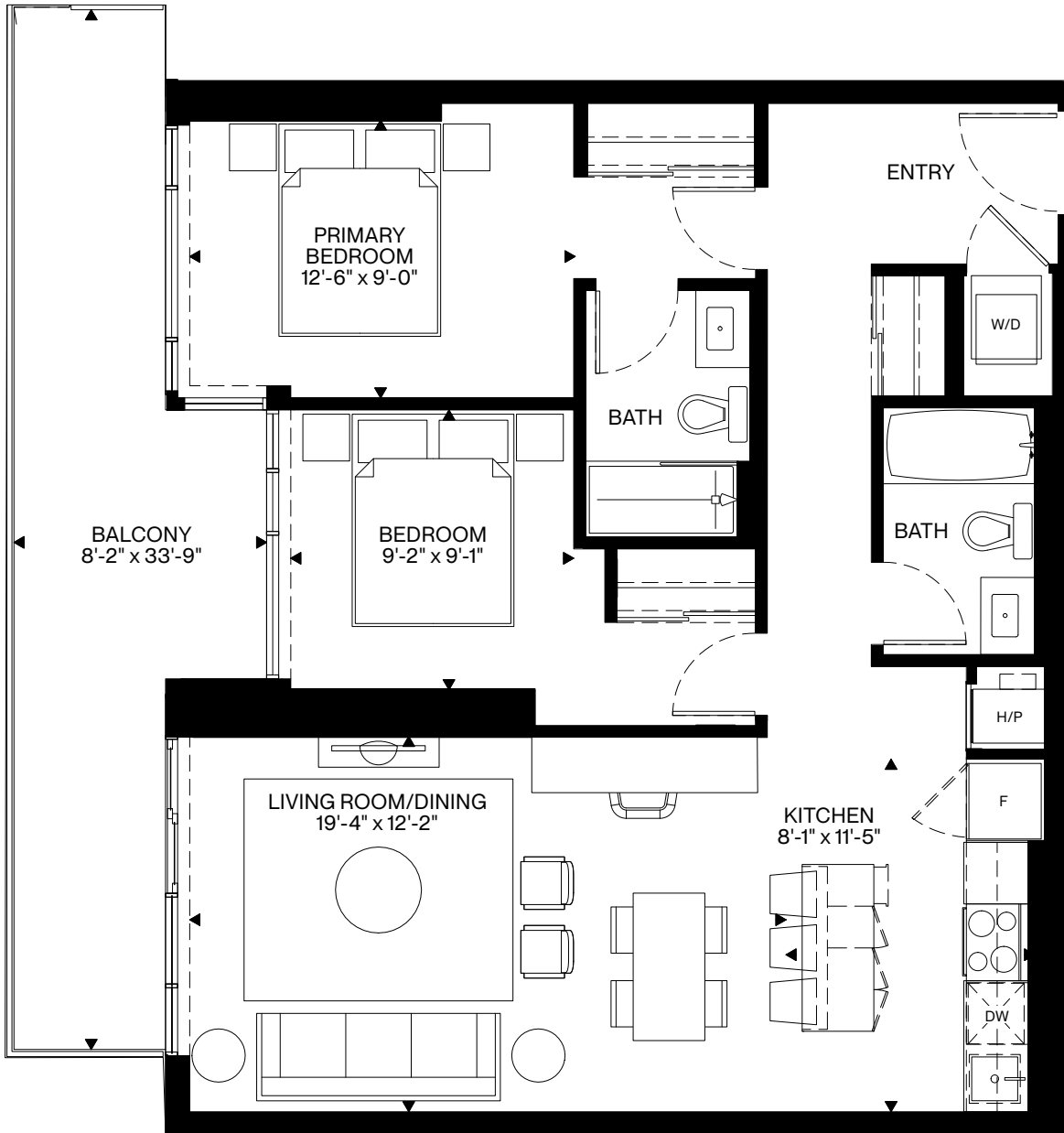


3rd



# Hilda

964 Sq. Ft.  
Interior



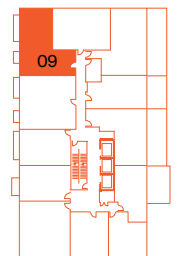
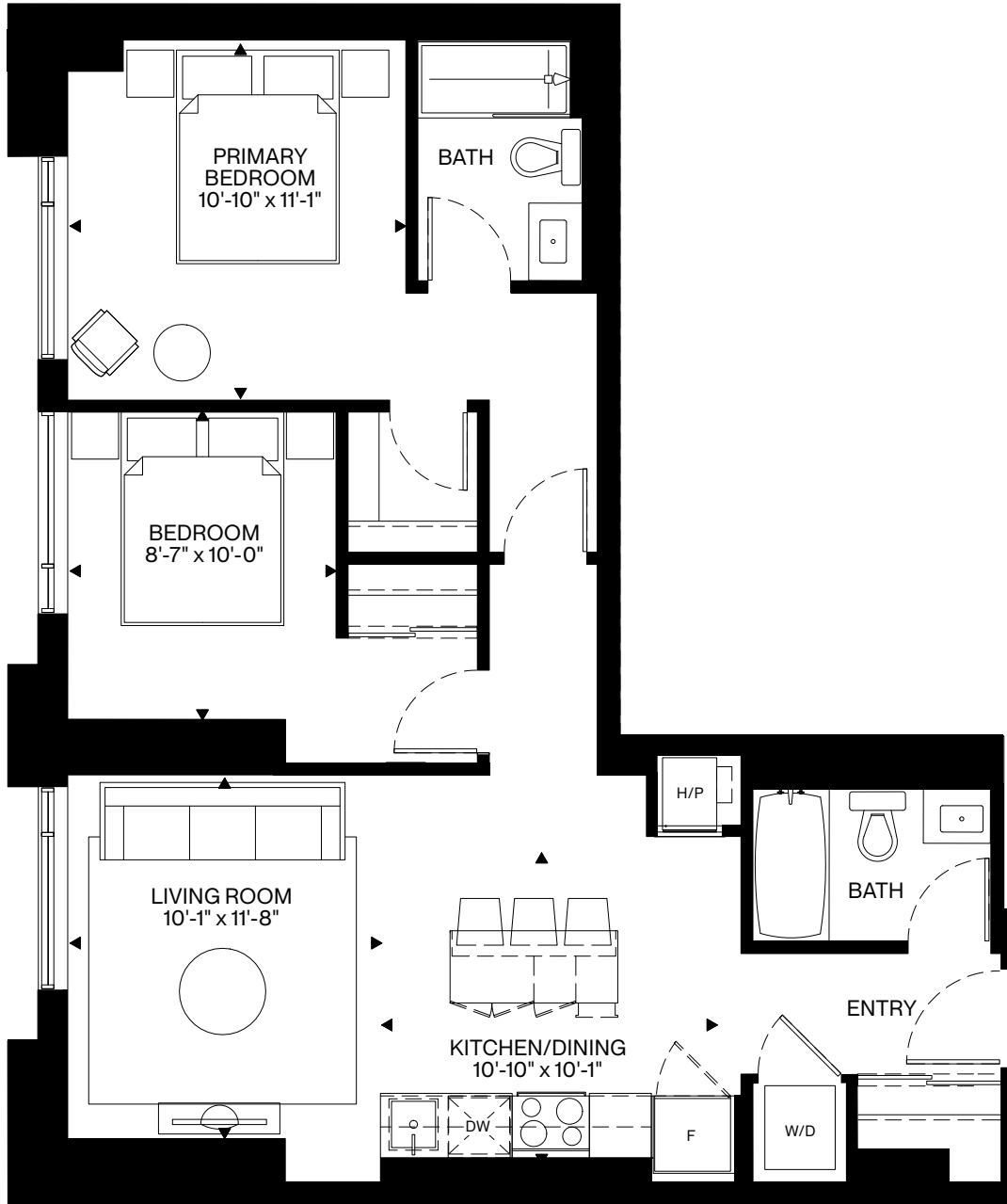
29th

All plans, materials, dimensions and specifications are subject to change without notice.  
Actual usable floor space may vary from stated floor area. E.&O.E.



# Burnside

920 Sq. Ft.  
Interior

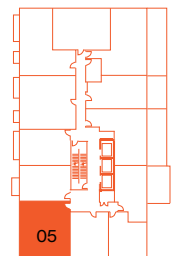
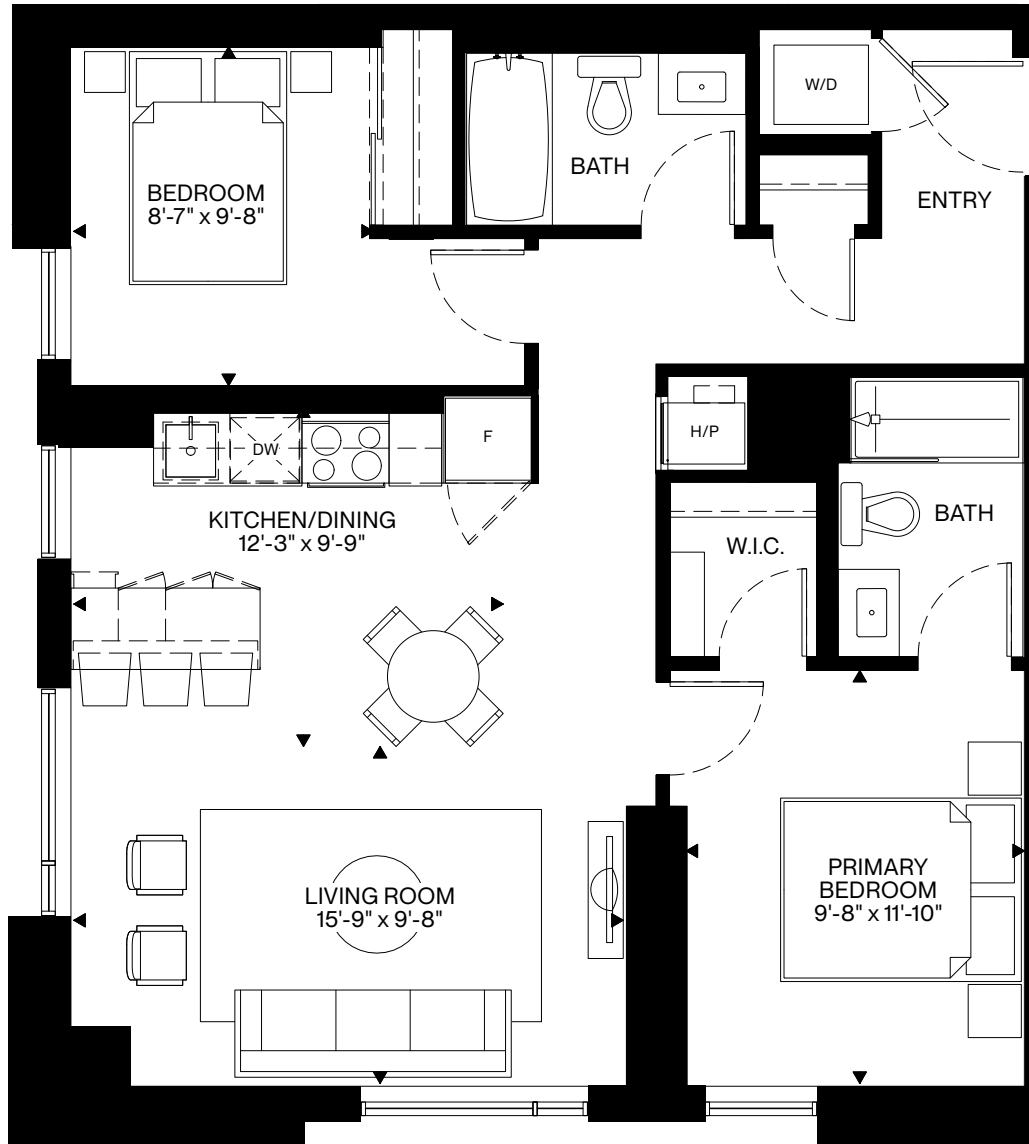


3rd



# Lyndale

932 Sq. Ft.  
Interior

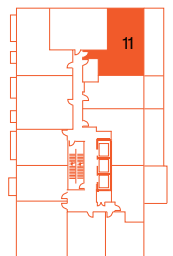
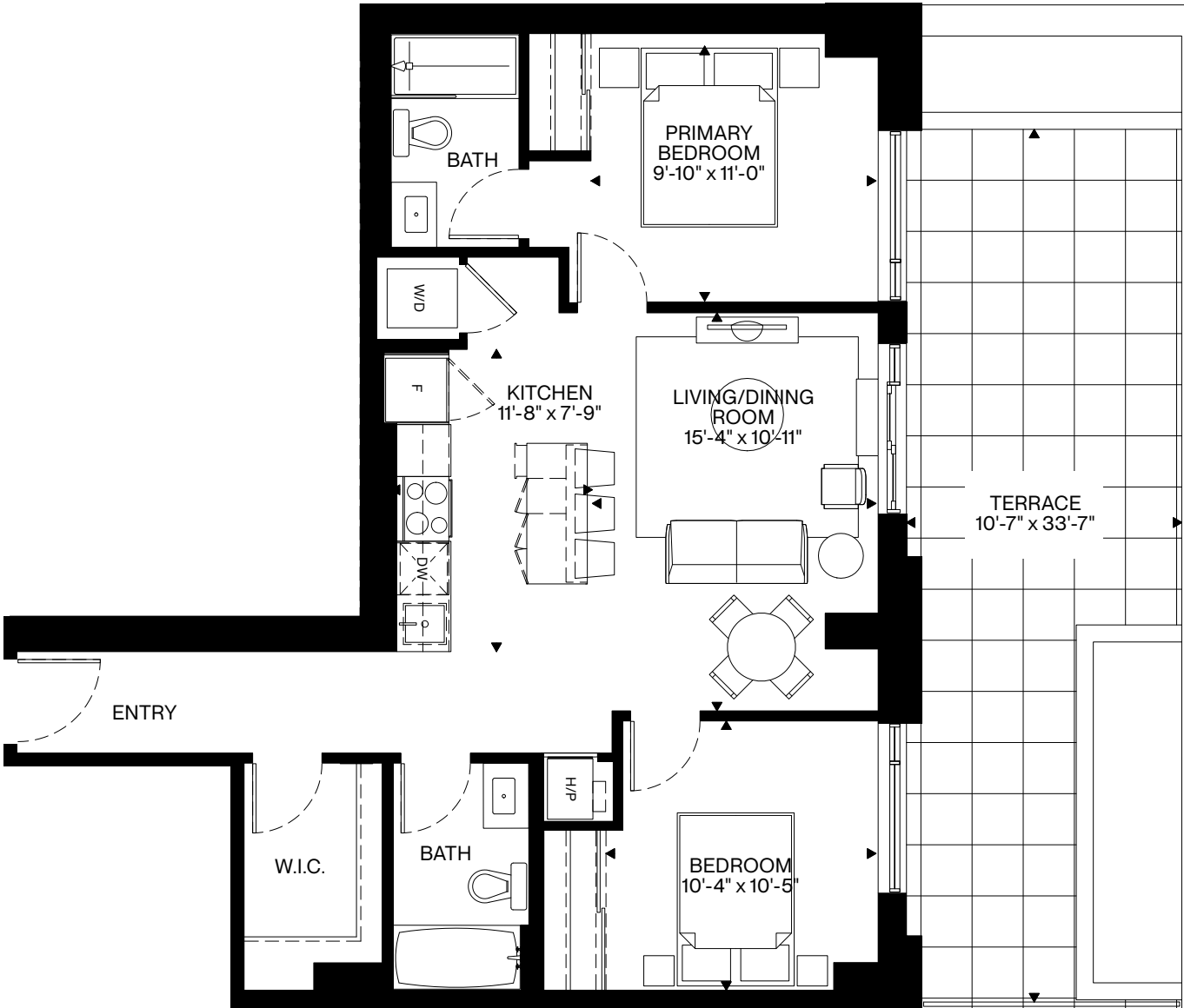


3rd



# Stonehurst

940 Sq. Ft.  
Interior

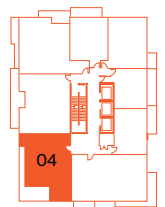
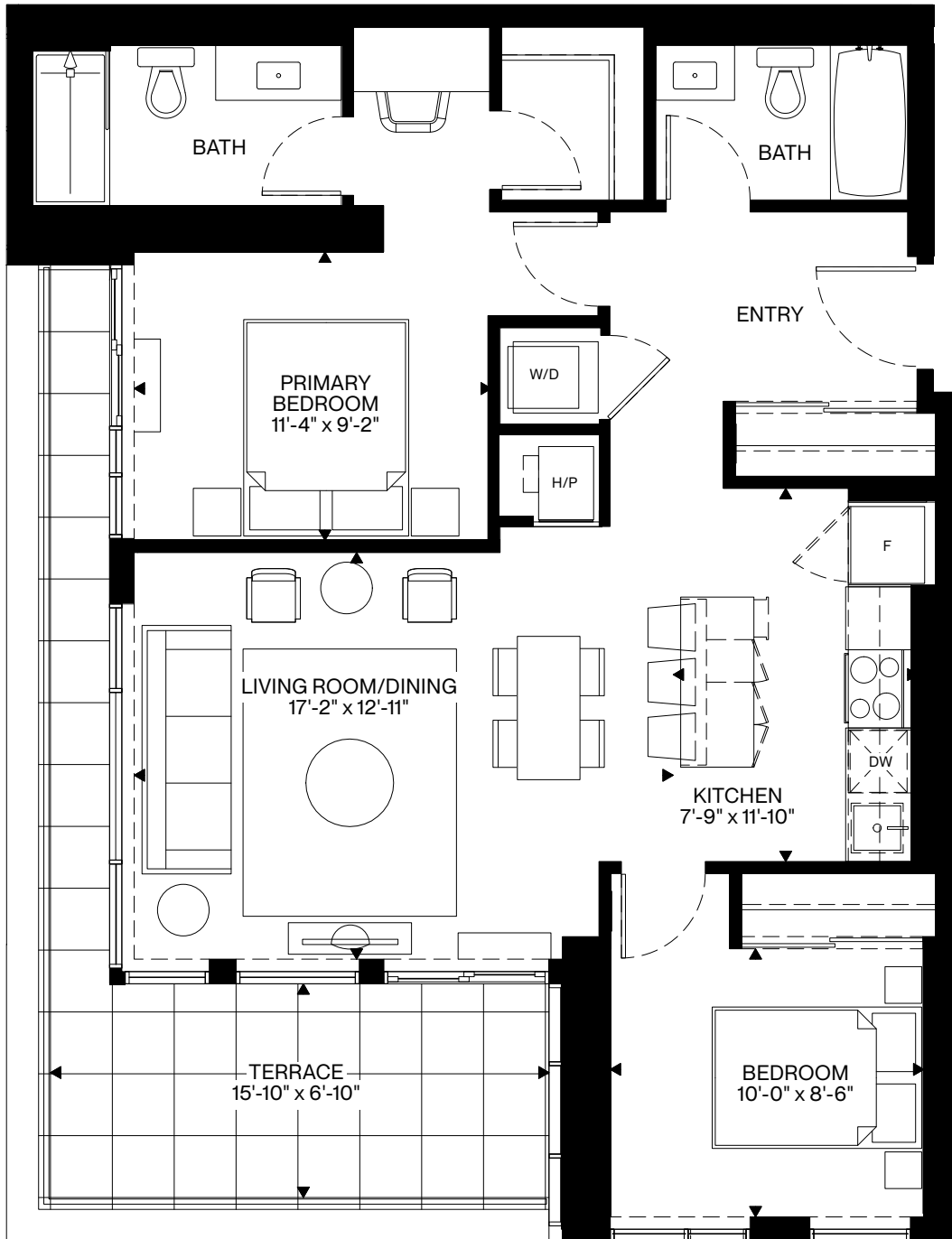


3rd



# Stirling

946 Sq. Ft.  
Interior



29th

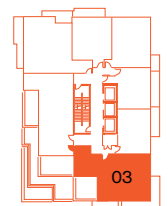
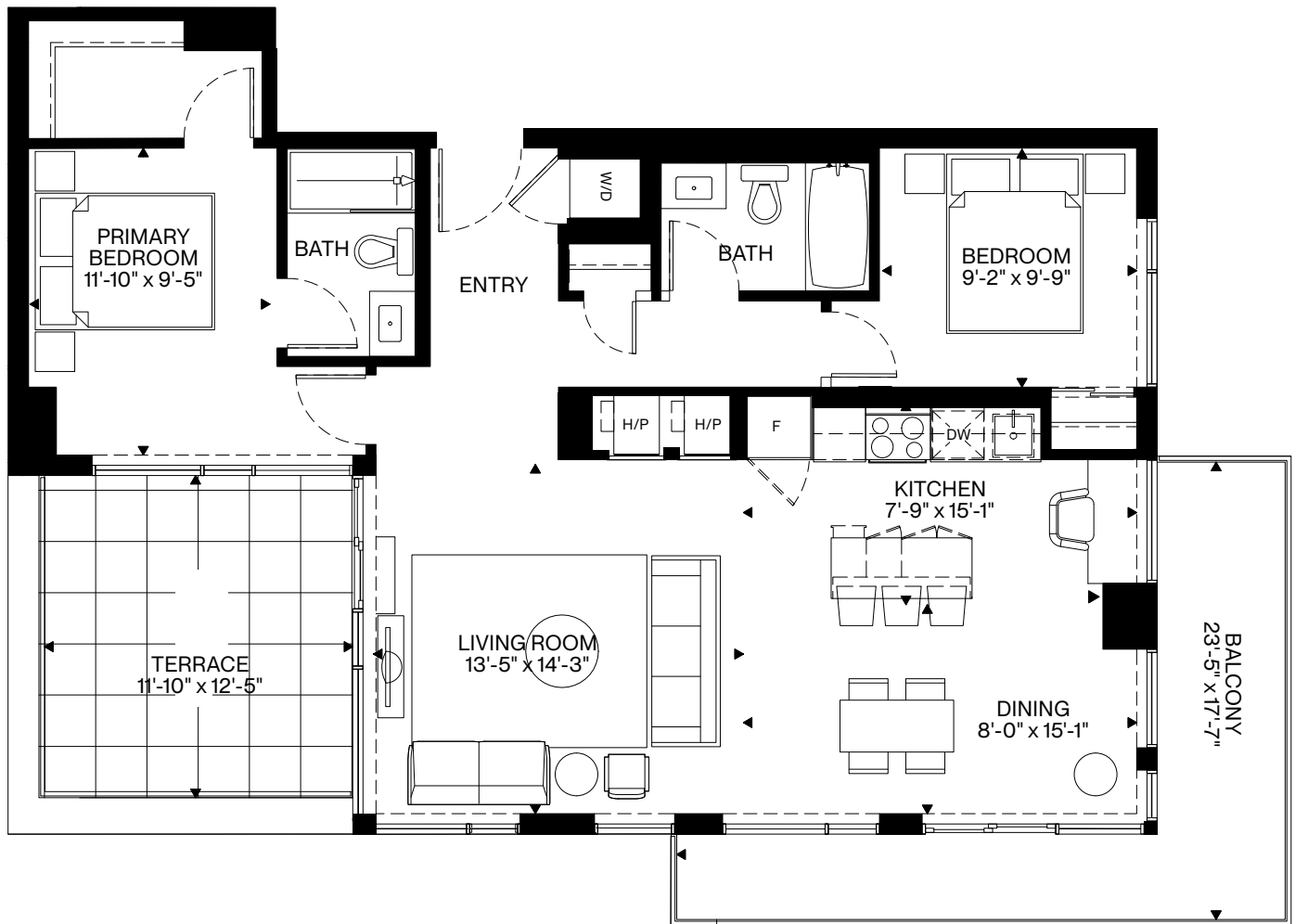
All plans, materials, dimensions and specifications are subject to change without notice. Actual usable floor space may vary from stated floor area. E.&O.E.





# Oxford

1050 Sq. Ft.  
Interior



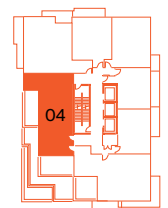
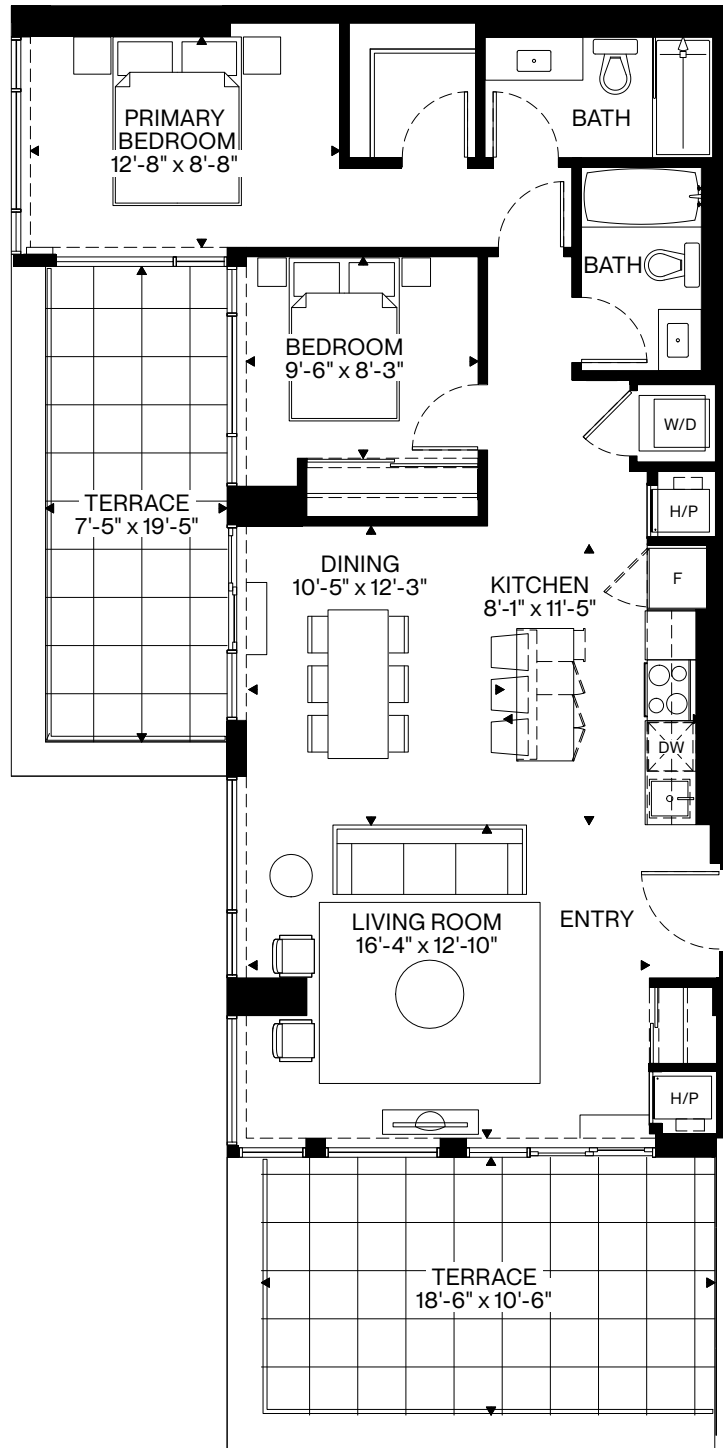
31st

All plans, materials, dimensions and specifications are subject to change without notice.  
Actual usable floor space may vary from stated floor area. E.&O.E.

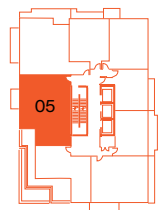
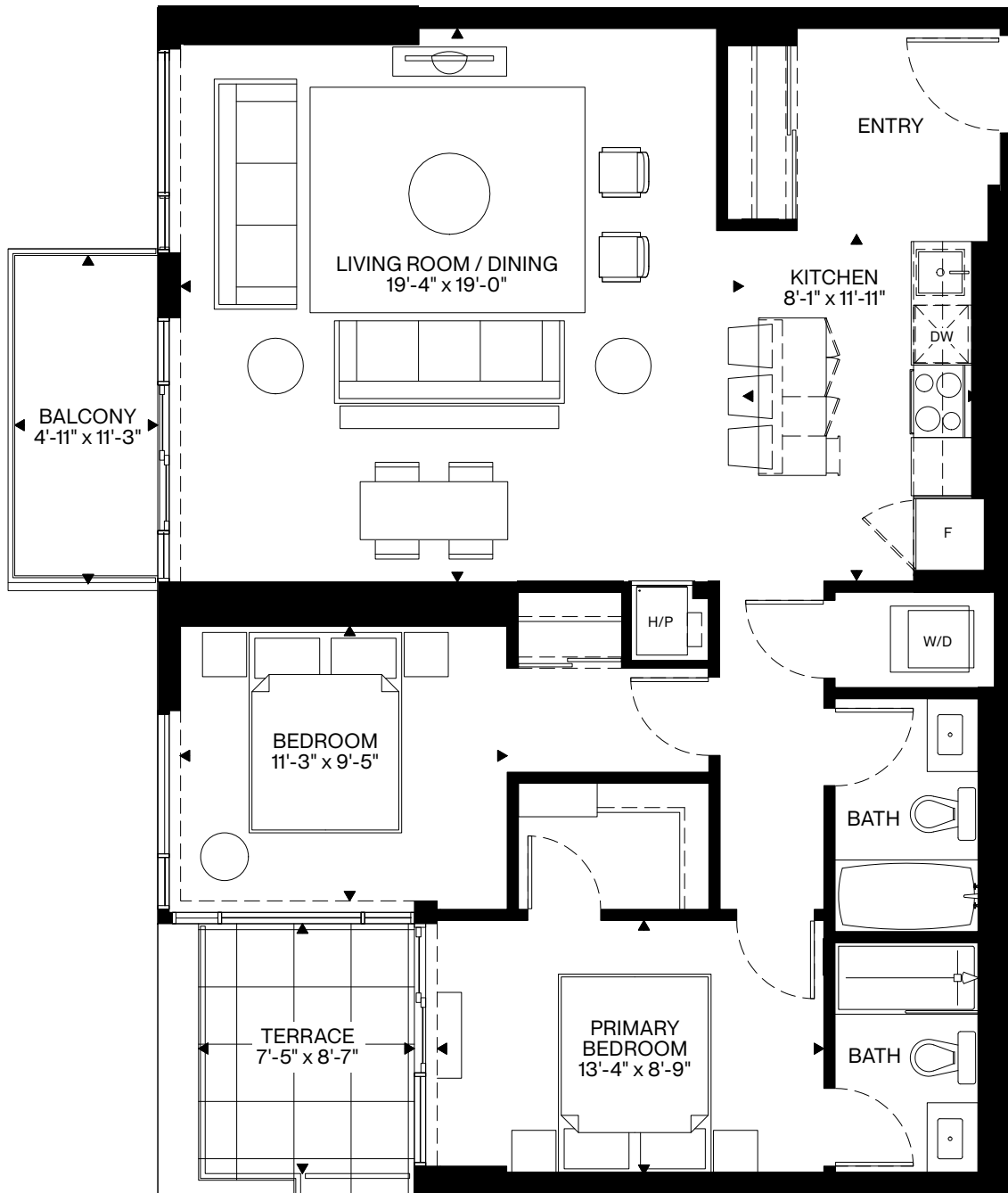


# Holland

1051 Sq. Ft.  
Interior



31st

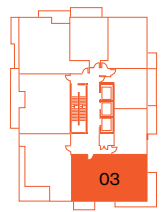
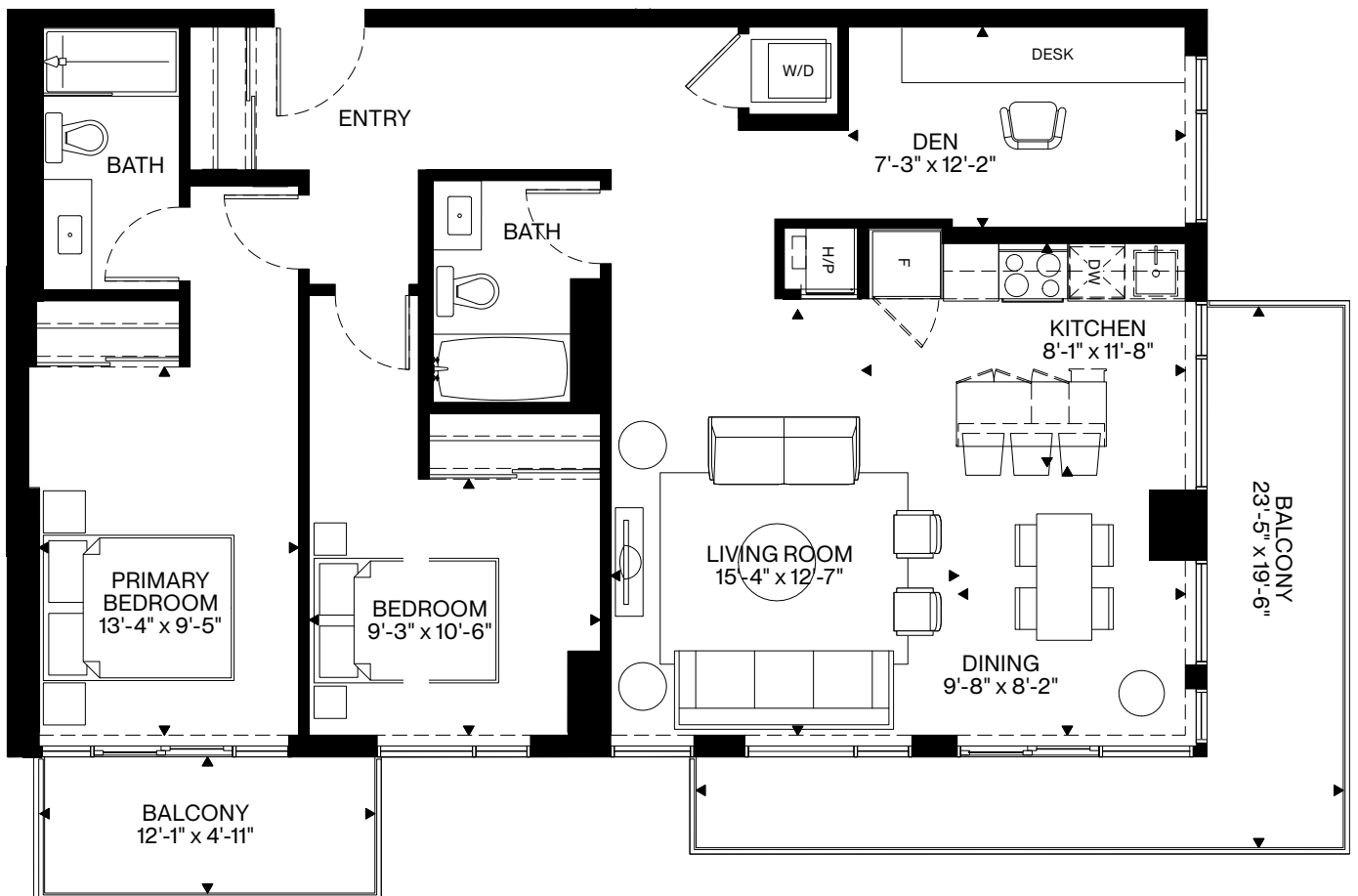


30th



# Bullman

1152 Sq. Ft.  
Interior



29th

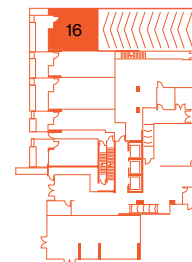
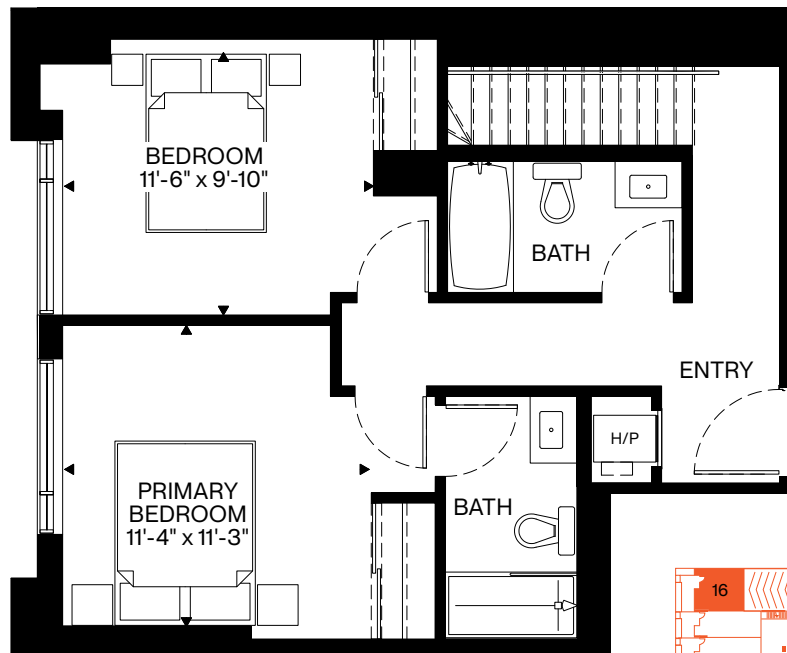
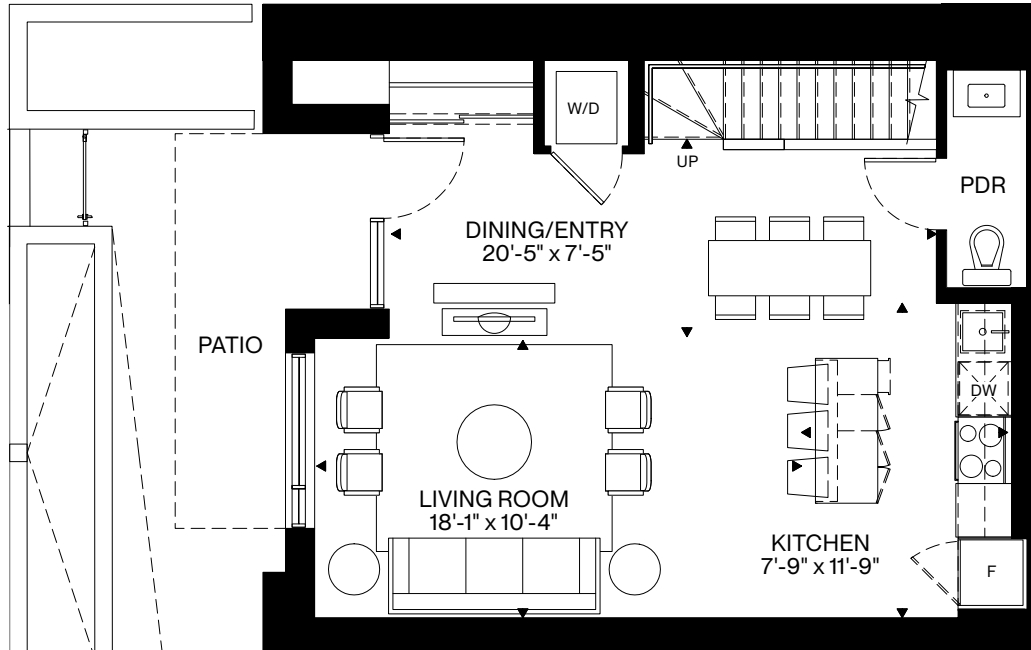
All plans, materials, dimensions and specifications are subject to change without notice.  
Actual usable floor space may vary from stated floor area. E.&O.E.



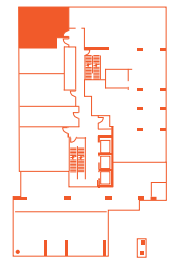
# Melrose

671 Sq. Ft.  
1st Level

625 Sq. Ft. 1296 Sq. Ft.  
2nd Level Total



Ground



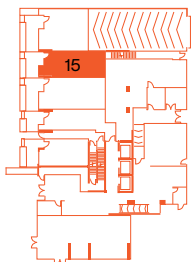
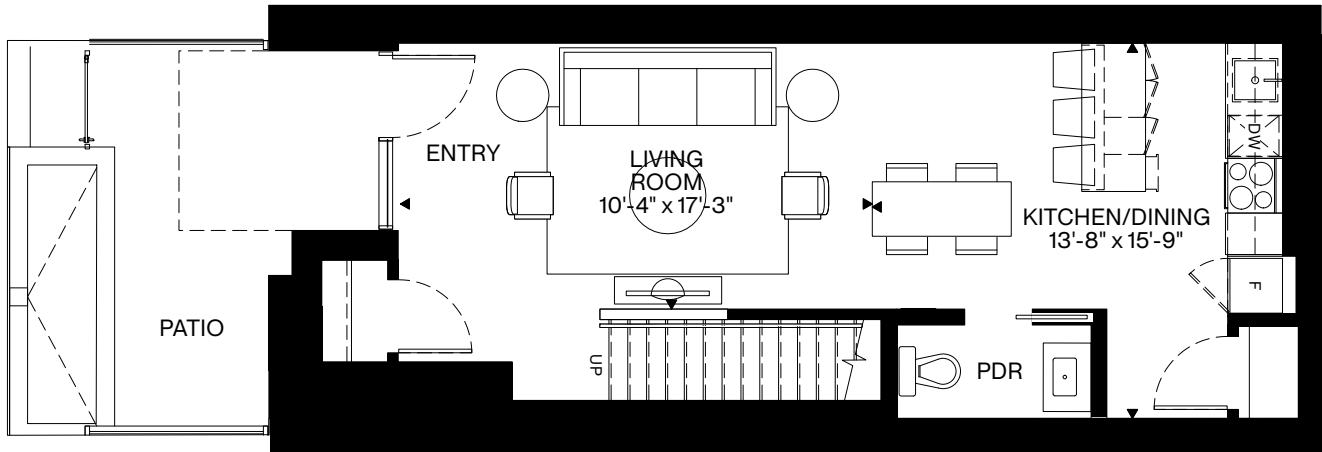
2nd



# Sherbrooke

557 Sq. Ft.  
1st Level

401 Sq. Ft. 958 Sq. Ft.  
2nd Level Total



Ground



2nd

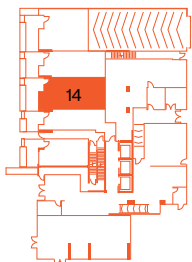
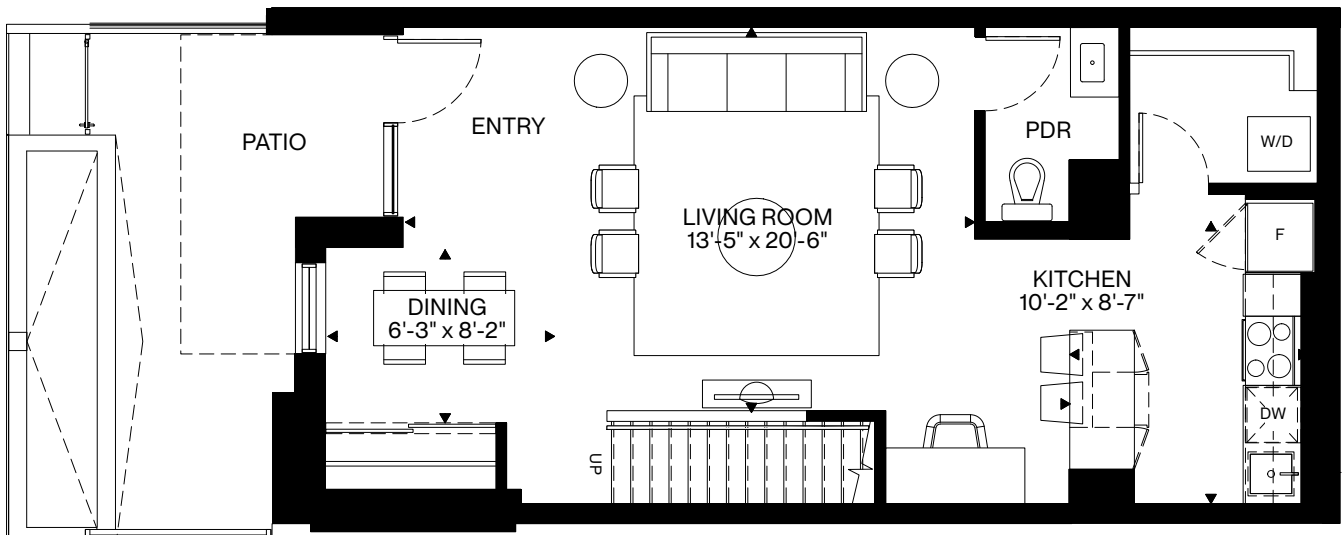
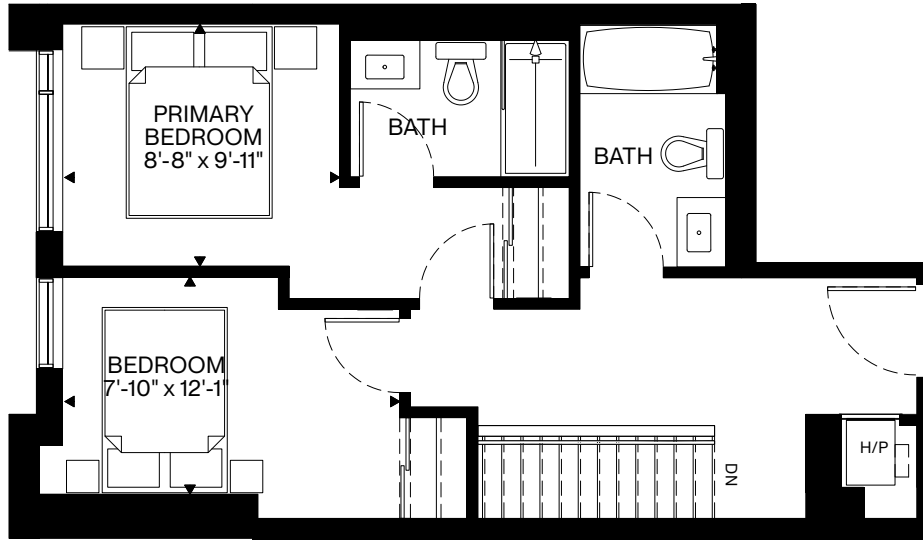
All plans, materials, dimensions and specifications are subject to change without notice.  
Actual usable floor space may vary from stated floor area. E.&O.E.



# Rosemount

655 Sq. Ft.  
1st Level

535 Sq. Ft. 1190 Sq. Ft.  
2nd Level Total



Ground



2nd

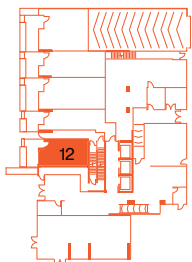
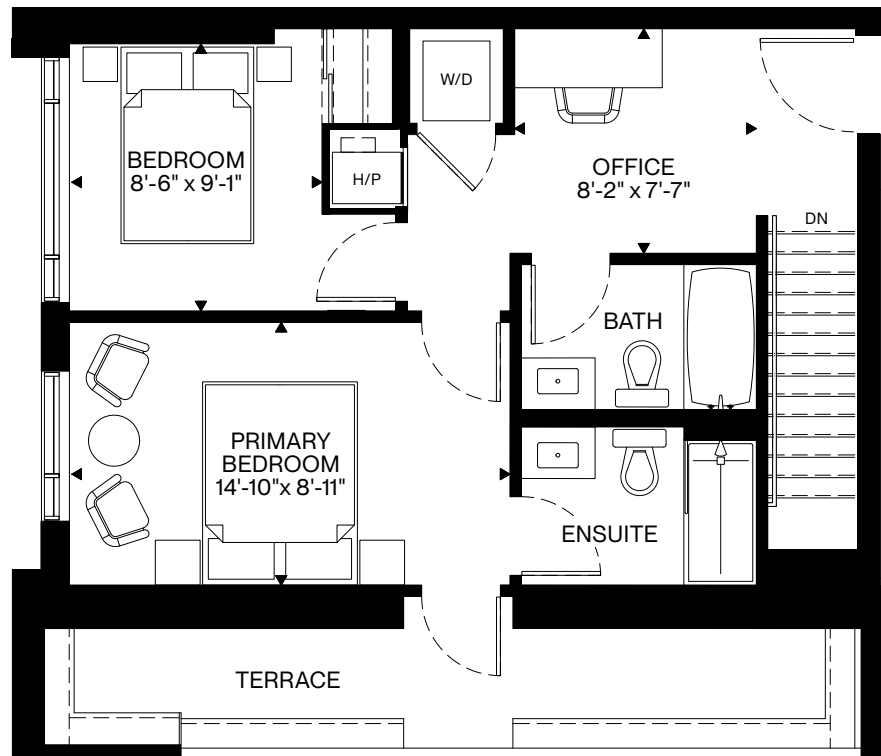
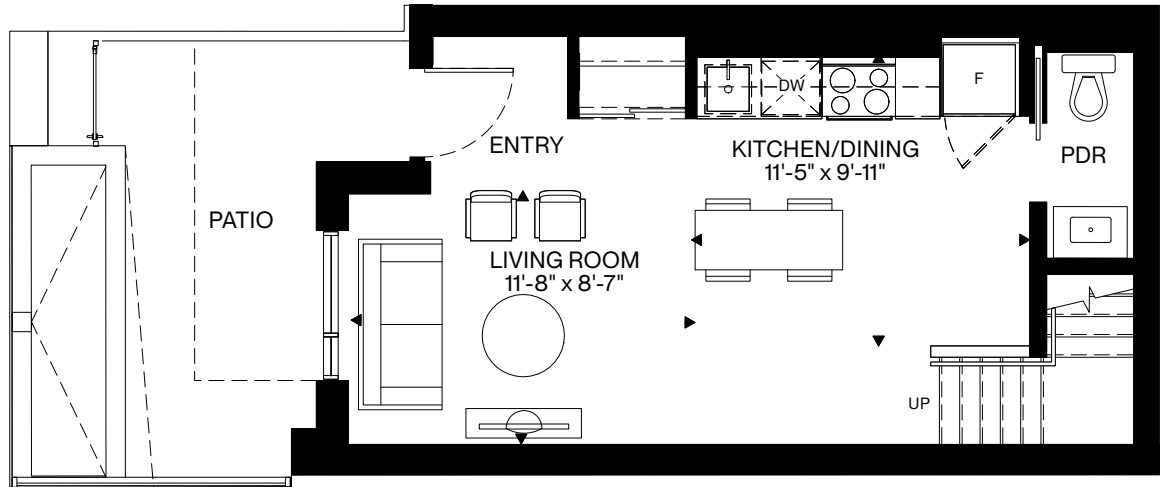
All plans, materials, dimensions and specifications are subject to change without notice.  
Actual usable floor space may vary from stated floor area. E.&O.E.



# Queensway

437 Sq. Ft.  
1st Level

736 Sq. Ft. 1173 Sq. Ft.  
2nd Level Total



Ground



2nd

All plans, materials, dimensions and specifications are subject to change without notice.  
Actual usable floor space may vary from stated floor area. E.&O.E.

DON'T JUST RENT,  
JOIN A COMMUNITY

[PARKDALECOLLECTIVE.COM](https://parkdalecollective.com)

Curated Rentals By

**RICHCRAFT**